

RBM12 Rabbit pAb

货号: **AYP18851**

产品信息

反应	Human
宿主	Rabbit
克隆性	Polyclonal
预测反应	
应用	WB
推荐浓度	WB: 1:500 - 1:2000
理论分子量	97kDa
实测分子量	110kDa
形式	Liquid
保存条件	Store at -20°C. Avoid freeze / thaw cycles. Buffer: PBS with 0.01% thiomersal, 50% glycerol, pH7.3.
偶联物	Unconjugated
阳性对照	Jurkat, HeLa
细胞定位	Nucleus
纯化	Affinity purification

抗原信息

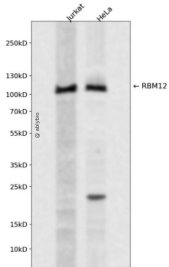
抗原信息	A synthetic peptide corresponding to a sequence within amino acids 800 to the C-terminus of human RBM 12 (NP_001185767.1).
序列	GGPPGFGSGPPGLGSAPGHLGGPPAFGPGPGPGPGPIHIGGPPGFASSSGKPGPTVIKVNMPFTVSIIDEILDFYGYQVIPGSVCLKYNEKGMPTGEAMVAFESRDEATAAVIDLNDRPIGSRKVKLVLG

靶点信息

研究背景	This gene encodes a protein that contains several RNA-binding motifs, potential transmembrane domains, and proline-rich regions. This gene and the gene for copine I overlap at map location 20q11.21. Alternative splicing in the 5' UTR results in four transcript variants. All variants encode the same protein.
基因ID	10137

基因名	RBM12
Swiss	Q9NTZ6
别名	RBM12;HRIHFB2091;SWAN

产品验证



Western blot analysis of RBM12 expressed in Jurkat, HeLa using RBM12 Rabbit pAb at 1:1000. Secondary antibody: HRP Goat Anti-Rabbit IgG (H+L) at 1:5000. Lysates/proteins: 30ug per lane. Blocking buffer: 5 % non-fat dry milk in TBST. Detection: ECL Enhanced Kit. Exposure time: 120s.

实验步骤

访问官网浏览详情: www.ablybio.cn