

# CDH9 Rabbit pAb

货号: **AYP18837**

## 产品信息

|       |  |
|-------|--|
| 反应    | Human  |
| 宿主    | Rabbit   |
| 克隆性   | Polyclonal   |
| 预测反应  |  |
| 应用    | WB   |
| 推荐浓度  | <b>WB:</b> 1:500 - 1:2000  |
| 理论分子量 | 88kDa  |
| 实测分子量 | 120kDa   |
| 形式    | Liquid   |
| 保存条件  | Store at -20°C. Avoid freeze / thaw cycles.<br>Buffer: PBS with 0.01% thiomersal, 50% glycerol, pH7.3. |
| 偶联物   | Unconjugated   |
| 阳性对照  | 293T, U-87MG, Jurkat, K-562  |
| 细胞定位  | Cell membrane, Single-pass type I membrane protein   |
| 纯化    | Affinity purification  |

## 抗原信息

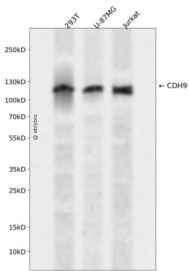
|      |   |
|------|---|
| 抗原信息 | Recombinant fusion protein containing a sequence corresponding to amino acids 340-420 of human CDH 9 (NP_057363.3). |
| 序列   | QMLYTLRVDSANTHPDRFLHLGPFKDTAVVKISVEDIDEPPVFTKVSYLEVDEDVKEGSIIGQVTAYDPDARNNLIKYS                                     |

## 靶点信息

|      |  |
|------|--|
| 研究背景 | This gene encodes a type II classical cadherin from the cadherin superfamily, integral membrane proteins that mediate calcium-dependent cell-cell adhesion. Mature cadherin proteins are composed of a large N-terminal extracellular domain, a single membrane-spanning domain, and a small, highly conserved C-terminal cytoplasmic domain. The extracellular domain consists of 5 subdomains, each containing a cadherin motif, and appears to determine the specificity of the protein's homophilic cell adhesion activity. Type II (atypical) cadherins are defined based on their lack of a HAV cell adhesion recognition sequence specific to type I cadherins. |
|------|--|

|       |        |
|-------|--------|
| 基因ID  | 1007   |
| 基因名   | CDH9   |
| Swiss | Q9ULB4 |
| 别名    | CDH9   |

## 产品验证



Western blot analysis of CDH9 expressed in 293T,U-87MG,Jurkat using CDH9 Rabbit pAb at 1:1000. Secondary antibody: HRP Goat Anti-Rabbit IgG (H+L) at 1:5000. Lysates/proteins: 30ug per lane. Blocking buffer: 5% non-fat dry milk in TBST. Detection: ECL Enhanced Kit. Exposure time: 120s.

## 实验步骤

访问官网浏览详情: [www.ablybio.cn](http://www.ablybio.cn)