

EPS8 Rabbit pAb

货号: **AYP18823**

产品信息

反应	Human,Mouse,Rat
宿主	Rabbit
克隆性	Polyclonal
预测反应	
应用	WB
推荐浓度	WB: 1:500 - 1:2000
理论分子量	62kDa/91kDa
实测分子量	100kDa
形式	Liquid
保存条件	Store at -20°C. Avoid freeze / thaw cycles. Buffer: PBS with 0.01% thiomersal,50% glycerol,pH7.3.
偶联物	Unconjugated
阳性对照	U-251MG,HeLa,HepG2,Mouse lung,Rat lung
细胞定位	Cell junction,Cell projection,Cytoplasm,cell cortex,growth cone,ruffle membrane,stereocilium,synapse,syn aptosome
纯化	Affinity purification

抗原信息

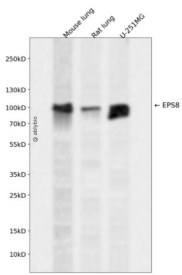
抗原信息	Recombinant fusion protein containing a sequence corresponding to amino acids 1-200 of human EPS8 (N P_004438.3).
序列	MNGHISNHPSSFGMYPSQMNGYGSSPTFSQTDREHGSKTSAKALYEQRKNYARDSVSSVSDISQYRVEHLTTFVLDRKD AMITVDDGIRKLLKLLDAKGKVTQDMILQVDDRAVSLIDLESKNELENFPLNTIQHCQAVMHSCSYDSVLALVCKEPTQNK PDLHLFQCDEVKANLISEDIESAISDSKGGKQRRPDALR

靶点信息

研究背景	This gene encodes a member of the EPS8 family. This protein contains one PH domain and one SH3 domain. It functions as part of the EGFR pathway, though its exact role has not been determined. Highly similar proteins in other organisms are involved in the transduction of signals from Ras to Rac and growth factor-mediated actin remodeling. Alternate transcriptional splice variants of this gene have been observed but have not been thoroughly characterized.
------	---

基因ID	2059
基因名	EPS8
Swiss	Q12929
别名	EPS8;DFNB102

产品验证



Western blot analysis of EPS8 expressed in Mouse lung,Rat lung,U-251MG using EPS8 Rabbit pAb at 1:1 000. Secondary antibody: HRP Goat Anti-Rabbit IgG (H+L) at 1:5000. Lysates/proteins: 30ug per lane. B locking buffer: 5% non-fat dry milk in TBST. Detection: ECL Enhanced Kit. Exposure time: 120s.

实验步骤

访问官网浏览详情: www.ablybio.cn