

# GUCA1B Rabbit pAb

货号: **AYP18819**

## 产品信息

反应	Mouse,Rat
宿主	Rabbit
克隆性	Polyclonal
预测反应	
应用	WB
推荐浓度	<b>WB:</b> 1:500 - 1:2000
理论分子量	23kDa
实测分子量	23kDa
形式	Liquid
保存条件	Store at -20°C. Avoid freeze / thaw cycles. Buffer: PBS with 0.01% thiomersal,50% glycerol,pH7.3.
偶联物	Unconjugated
阳性对照	Mouse eye,Rat eye
细胞定位	Cell membrane
纯化	Affinity purification

## 抗原信息

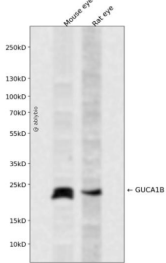
抗原信息	Recombinant fusion protein containing a sequence corresponding to amino acids 1-200 of human GUCA1 B (NP_002089.4).
序列	MGQEFSWEEAEAAAGEIDVAELQEWYKFFVMECPSTLGMHEFKRFFKVTDDDEASQYVEGMFRAFDKNGDNTIDFLEYV AALNLVLRGTLEHKLKWTFKIYDKDNGCIDRLELLNIVEGIYQLKKACRRELQTEQGQLLTPEEVVDRIFLLVDENGDGQL SLNEFVEGARRDKWVMKMLQMDMNPSSWLAQRRKSAMF

## 靶点信息

研究背景	The protein encoded by this gene is a calcium-binding protein that activates photoreceptor guanylate cyc lases. This gene may have arisen due to a gene duplication event since there is a highly similar gene clus tered with it on chromosome 6. Mutations in this gene can cause a form of retinitis pigmentosa.
基因ID	2979

基因名	GUCA1B
Swiss	Q9UMX6
别名	GUCA1B;GCAP2;GUCA2;RP48

## 产品验证



Western blot analysis of GUCA1B expressed in Mouse eye,Rat eye using GUCA1B Rabbit pAb at 1:1000. Secondary antibody: HRP Goat Anti-Rabbit IgG (H+L) at 1:5000. Lysates/proteins: 30ug per lane. Blocking buffer: 5% non-fat dry milk in TBST. Detection: ECL Enhanced Kit. Exposure time: 120s.

## 实验步骤

访问官网浏览详情: [www.ablybio.cn](http://www.ablybio.cn)