

— ABLYBIO, Help Your Research



Smad6 Rabbit pAb

货号: **AYP18815**

产品信息

反应	Human,Mouse,Rat
宿主	Rabbit
克隆性	Polyclonal
预测反应	
应用	WB IF/ICC
推荐浓度	WB: 1:500 - 1:2000 IF/ICC: 1:50 - 1:200
理论分子量	26kDa/35kDa/53kDa
实测分子量	53kDa
形式	Liquid
保存条件	Store at -20°C. Avoid freeze / thaw cycles. Buffer: PBS with 0.02% sodium azide,50% glycerol,pH7.3.
偶联物	Unconjugated
阳性对照	A-549,22Rv1,HeLa
细胞定位	Nucleus
纯化	Affinity purification

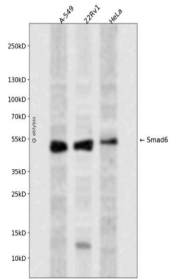
抗原信息

抗原信息	Recombinant fusion protein containing a sequence corresponding to amino acids 257-496 of human Smad6 (NP_005576.3).
------	---

靶点信息

研究背景	The protein encoded by this gene belongs to the SMAD family of proteins, which are related to <i>Drosophila</i> 'mothers against decapentaplegic' (Mad) and <i>C. elegans</i> Sma. SMAD proteins are signal transducers and transcriptional modulators that mediate multiple signaling pathways. This protein functions in the negative regulation of BMP and TGF-beta/activin-signalling. Multiple transcript variants have been found for this gene.
基因ID	4091
基因名	SMAD6
Swiss	O43541 (https://www.uniprot.org/uniprotkb/O43541/entry)
别名	SMAD6,AOVD2,HsT17432,MADH6,MADH7,Smad6 Rabbit pAb,Mothers against decapentaplegic homolog 6

产品验证



Western blot analysis of Smad6 expressed in A-549, 22Rv1, HeLa using Smad6 Rabbit pAb at 1:1000. Secondary antibody: HRP Goat Anti-Rabbit IgG (H+L) at 1:5000. Lysates/proteins: 30ug per lane. Blocking buffer: 5% non-fat dry milk in TBST. Detection: ECL Enhanced Kit. Exposure time: 120s.

实验步骤

访问官网浏览详情: www.ablybio.cn (<https://www.ablybio.cn/>www.ablybio.cn)