

NFE2L1 Rabbit pAb

货号: **AYP18813**

产品信息

反应	Human,Mouse,Rat
宿主	Rabbit
克隆性	Polyclonal
预测反应	
应用	WB IHC IF/ICC
推荐浓度	WB: 1:500 - 1:1000 IHC: 1:50 - 1:200 IF/ICC: 1:50 - 1:200
理论分子量	81kDa/84kDa
实测分子量	120kDa
形式	Liquid
保存条件	Store at -20°C. Avoid freeze / thaw cycles. Buffer: PBS with 0.01% thiomersal,50% glycerol,pH7.3.
偶联物	Unconjugated
阳性对照	HeLa,HepG2,Jurkat
细胞定位	Endoplasmic reticulum membrane,Nucleus,Single-pass type II membrane protein
纯化	Affinity purification

抗原信息

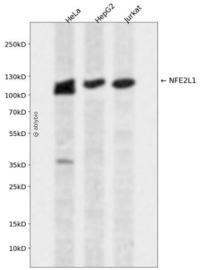
抗原信息	Recombinant fusion protein containing a sequence corresponding to amino acids 515-772 of human NFE2L1 (NP_003195.1).
序列	SSSFSEEGAVGYSSDSETLDLEEAEGAVGYQPEYSKFCRMSYQDPAQLSCLPYLEHVGHNHTYNNMAPSALDSADLPPPSA LKKGSKEKQADFLDKQMSRDEHRARAMKIPFTNDKIIINLPVEEFNELLSKYQLSEAQLSLIRDIRRRGKNKMAAQNCRKRKL DTILNLERDVEDLQRDKARLLREKVEFLRSLRQMKQKVQSLYQEVFGRRLDENGRPYSPSQYALQYAGDGSVLLIPTMA DQQARRQERKPKDRRK

靶点信息

研究背景	This gene encodes a protein that is involved in globin gene expression in erythrocytes. Confusion has occurred in bibliographic databases due to the shared symbol of NRF1 for this gene, NFE2L1, and for 'nuclear respiratory factor 1' which has an official symbol of NRF1.
------	--

基因ID	4779
基因名	NFE2L1
Swiss	Q14494
别名	NFE2L1;LCR-F1;NRF1;TCF11

产品验证



Western blot analysis of NFE2L1 expressed in HeLa, HepG2, Jurkat using NFE2L1 Rabbit pAb at 1:1000. Secondary antibody: HRP Goat Anti-Rabbit IgG (H+L) at 1:5000. Lysates/proteins: 30ug per lane. Blocking buffer: 5% non-fat dry milk in TBST. Detection: ECL Enhanced Kit. Exposure time: 120s.

实验步骤

访问官网浏览详情: www.ablybio.cn