

PDE6D Rabbit pAb

货号: **AYP18811**

产品信息

反应	Human,Mouse,Rat
宿主	Rabbit
克隆性	Polyclonal
预测反应	
应用	WB IHC IF/ICC
推荐浓度	WB: 1:500 - 1:2000 IHC: 1:50 - 1:100 IF/ICC: 1:50 - 1:100
理论分子量	17kDa
实测分子量	14-15kDa
形式	Liquid
保存条件	Store at -20°C. Avoid freeze / thaw cycles. Buffer: PBS with 0.01% thiomersal,50% glycerol,pH7.3.
偶联物	Unconjugated
阳性对照	HT-29,OVCAR3,Mouse brain,Mouse kidney,Mouse lung,Mouse testis
细胞定位	Cytoplasm,Cytoplasmic vesicle membrane,Peripheral membrane protein,cilium basal body,cytoskeleton,cytosol
纯化	Affinity purification

抗原信息

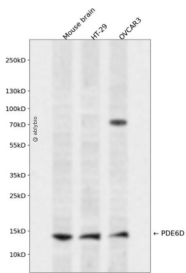
抗原信息	Recombinant fusion protein containing a sequence corresponding to amino acids 1-150 of human PDE6D (NP_002592.1).
序列	MSAKDERAREILRGFKLNWMNLRDAETGKILWQGTEDLSVPGVEHEARVPKKILKCKAVSRELNFSSTEQMEKFRLEQKVYFKGQCLEEWFFEFVGFVIPNSTNTWQSLIEAAPESQMMPASVLTGNVVIETKFFDDDLLVSTSRVRLFVY

靶点信息

研究背景	This gene encodes the delta subunit of rod-specific photoreceptor phosphodiesterase (PDE), a key enzyme in the phototransduction cascade. A similar protein in cow functions in solubilizing membrane-bound PDE. In addition to its role in the PDE complex, the encoded protein is thought to bind to prenyl groups of proteins to target them to subcellular organelles called cilia. Mutations in this gene are associated with Joubert syndrome-22. Alternative splicing results in multiple splice variants.
------	---

基因ID	5147
基因名	PDE6D
Swiss	O43924
别名	PDE6D;JBTS22;PDED

产品验证



Western blot analysis of PDE6D expressed in Mouse brain, HT-29, OVCAR3 using PDE6D Rabbit pAb at 1:1000. Secondary antibody: HRP Goat Anti-Rabbit IgG (H+L) at 1:5000. Lysates/proteins: 30ug per lane. Blocking buffer: 5% non-fat dry milk in TBST. Detection: ECL Enhanced Kit. Exposure time: 120s.

实验步骤

访问官网浏览详情: www.ablybio.cn