

S100A5 Rabbit pAb

货号: **AYP18805**

产品信息

反应	Human
宿主	Rabbit
克隆性	Polyclonal
预测反应	
应用	WB IHC
推荐浓度	WB: 1:500 - 1:2000 IHC: 1:100 - 1:200
理论分子量	10kDa/12kDa
实测分子量	11kDa
形式	Liquid
保存条件	Store at -20°C. Avoid freeze / thaw cycles. Buffer: PBS with 0.01% thiomersal, 50% glycerol, pH 7.3.
偶联物	Unconjugated
阳性对照	U-251MG
细胞定位	nucleus
纯化	Affinity purification

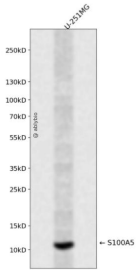
抗原信息

抗原信息	Recombinant fusion protein containing a sequence corresponding to amino acids 1-92 of human S100A5 (NP_002953.2).
序列	METPLEKALTTMVTTFFHKYSGREGSKLTLRKEKELIKKELCLGEMKESSIDDLMKSLDKNSDQEIDFKEYSVFLTMLCMA YNDFFLEDNK

靶点信息

研究背景	The protein encoded by this gene is a member of the S100 family of proteins containing 2 EF-hand calcium-binding motifs. S100 proteins are localized in the cytoplasm and/or nucleus of a wide range of cells, and involved in the regulation of a number of cellular processes such as cell cycle progression and differentiation. S100 genes include at least 13 members which are located as a cluster on chromosome 1q21. This protein has a Ca ²⁺ affinity 20- to 100-fold higher than the other S100 proteins studied under identical conditions. This protein also binds Zn ²⁺ and Cu ²⁺ , and Cu ²⁺ strongly which impairs the binding of Ca ²⁺ . This protein is expressed in very restricted regions of the adult brain.
基因ID	6276
基因名	S100A5
Swiss	P33763
别名	S100A5;S100D

产品验证



Western blot analysis of S100A5 expressed in U-251MG using S100A5 Rabbit pAb at 1:1000. Secondary antibody: HRP Goat Anti-Rabbit IgG (H+L) at 1:5000. Lysates/proteins: 30ug per lane. Blocking buffer: 5% non-fat dry milk in TBST. Detection: ECL Enhanced Kit. Exposure time: 120s.

实验步骤

访问官网浏览详情: www.ablybio.cn