

RPE Rabbit pAb

货号: **AYP18804**

产品信息

反应	Human,Mouse,Rat
宿主	Rabbit
克隆性	Polyclonal
预测反应	
应用	WB IHC IF/ICC
推荐浓度	WB: 1:500 - 1:2000 IHC: 1:50 - 1:100 IF/ICC: 1:50 - 1:100
理论分子量	17kDa/19kDa/21kDa/23kDa/24kDa
实测分子量	25kDa
形式	Liquid
保存条件	Store at -20°C. Avoid freeze / thaw cycles. Buffer: PBS with 0.01% thiomersal,50% glycerol,pH7.3.
偶联物	Unconjugated
阳性对照	K-562,HeLa,293T,Mouse brain,Mouse heart,Mouse thymus,Rat brain
细胞定位	cytosol,extracellular exosome
纯化	Affinity purification

抗原信息

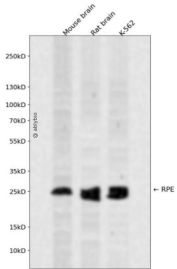
抗原信息	Recombinant fusion protein containing a sequence corresponding to amino acids 1-228 of human RPE (N P_954699.1).
序列	MASGCKIGPSILNSDLANLGAECLRMLDSGADYLHLDVMDGHFVFNITFGHPVVESLRKQLGQDPFFDMHMMVSKPEQ WVKPMAVAGANQYTFHLEATENPGALIKDIRENGMKVGLAIKPGTSVEYLAPWANQIDMALVMTVEPGFGGQKFMEDM MPKVHWRQTQFPLDIEVDGGVGPDTVHKCAEAGANMIVSGSAIMRSEDPRSVINLLRNVCSEAAQKRSLDR

靶点信息

研究背景	Catalyzes the reversible epimerization of D-ribulose 5-phosphate to D-xylulose 5-phosphate.
基因ID	6120

基因名	RPE
Swiss	Q96AT9
别名	RPE;RPE2-1

产品验证



Western blot analysis of RPE expressed in Mouse brain,Rat brain,K-562 using RPE Rabbit pAb at 1:1000. Secondary antibody: HRP Goat Anti-Rabbit IgG (H+L) at 1:5000. Lysates/proteins: 30ug per lane. Blocking buffer: 5% non-fat dry milk in TBST. Detection: ECL Enhanced Kit. Exposure time: 120s.

实验步骤

访问官网浏览详情: www.ablybio.cn