

SLC6A6 Rabbit pAb

货号: **AYP18800**

产品信息

反应	Human,Mouse,Rat
宿主	Rabbit
克隆性	Polyclonal
预测反应	
应用	WB
推荐浓度	WB: 1:500 - 1:1000
理论分子量	22kDa/69kDa
实测分子量	70KDa
形式	Liquid
保存条件	Store at -20°C. Avoid freeze / thaw cycles. Buffer: PBS with 0.01% thiomersal,50% glycerol,pH7.3.
偶联物	Unconjugated
阳性对照	NCI-H460,BxPC-3,Mouse brain,Mouse liver,Rat lung
细胞定位	Cell membrane,Multi-pass membrane protein
纯化	Affinity purification

抗原信息

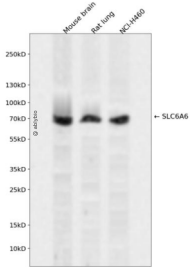
抗原信息	Recombinant fusion protein containing a sequence corresponding to amino acids 250-320 of human SLC6A6 (NP_001127839.2).
序列	LFQSFQKELPWAHCNHSWNTPHCMEDTMRKNKSVWITISSTNFTSPVIEFWERNVLSLSPGIDHPGSLKWD

靶点信息

研究背景	This gene encodes a multi-pass membrane protein that is a member of a family of sodium and chloride-ion dependent transporters. The encoded protein transports taurine and beta-alanine. There is a pseudogene for this gene on chromosome 21. Alternative splicing results in multiple transcript variants.
基因ID	6533
基因名	SLC6A6

Swiss	P31641
别名	SLC6A6;TAUT

产品验证



Western blot analysis of SLC6A6 expressed in Mouse brain,Rat lung,NCI-H460 using SLC6A6 Rabbit pAb at 1:1000. Secondary antibody: HRP Goat Anti-Rabbit IgG (H+L) at 1:5000. Lysates/proteins: 30ug per lane. Blocking buffer: 5% non-fat dry milk in TBST. Detection: ECL Enhanced Kit. Exposure time: 120s.

实验步骤

访问官网浏览详情: www.ablybio.cn