

WISP3 Rabbit pAb

货号: **AYP18783**

产品信息

反应	Human,Mouse,Rat
宿主	Rabbit
克隆性	Polyclonal
预测反应	
应用	WB
推荐浓度	WB: 1:500 - 1:2000
理论分子量	39kDa/41kDa
实测分子量	41kDa
形式	Liquid
保存条件	Store at -20°C. Avoid freeze / thaw cycles. Buffer: PBS with 0.01% thiomersal,50% glycerol,pH7.3.
偶联物	Unconjugated
阳性对照	293T,HT-29,DU145,HepG2,Mouse brain,Rat brain
细胞定位	Secreted
纯化	Affinity purification

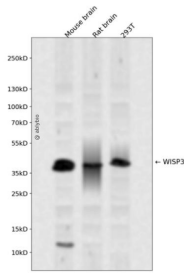
抗原信息

抗原信息	Recombinant fusion protein containing a sequence corresponding to amino acids 42-260 of human WISP3 (NP_937882.1).
序列	TGPLDTTPEGRPGEVSDAPQRKQFCHWPCKPQKPRCPPGVSLVRDGGCGCKICAKQPGEICNEADLCDPHKGLYCDY SVDRPRYETGVCAYLVAVGCEFNQVHYHNGQVFQPNPLFSLCLCVSGAIGCTPLFIPKLAGSHCSGAKGGKSDQSNCSLE PLLQLSTSYKTMPAYRNLPLIWKKKCLVQATKWTPCSRTC GMGISNRVTNENSNCEMRK

靶点信息

研究背景	This gene encodes a member of the WNT1 inducible signaling pathway (WISP) protein subfamily, which belongs to the connective tissue growth factor (CTGF) family. WNT1 is a member of a family of cysteine-rich, glycosylated signaling proteins that mediate diverse developmental processes. The CTGF family members are characterized by four conserved cysteine-rich domains: insulin-like growth factor-binding domain, von Willebrand factor type C module, thrombospondin domain and C-terminal cystine knot-like domain. This gene is overexpressed in colon tumors. It may be downstream in the WNT1 signaling pathway that is relevant to malignant transformation. Mutations of this gene are associated with progressive pseudorheumatoid dysplasia, an autosomal recessive skeletal disorder, indicating that the gene is essential for normal postnatal skeletal growth and cartilage homeostasis. Multiple transcript variants encoding different isoforms have been found for this gene.
基因ID	8838
基因名	WISP3
Swiss	O95389
别名	WISP3;CCN6;LIBC;PPAC;PPD;WISP-3

产品验证



Western blot analysis of WISP3 expressed in Mouse brain, Rat brain, 293T using WISP3 Rabbit pAb at 1:1000. Secondary antibody: HRP Goat Anti-Rabbit IgG (H+L) at 1:5000. Lysates/proteins: 30ug per lane. Blocking buffer: 5% non-fat dry milk in TBST. Detection: ECL Enhanced Kit. Exposure time: 120s.

实验步骤

访问官网浏览详情: www.ablybio.cn