

LPAR2 Rabbit pAb

货号: **AYP18780**

产品信息

反应	Human
宿主	Rabbit
克隆性	Polyclonal
预测反应	
应用	WB
推荐浓度	WB: 1:500 - 1:2000
理论分子量	39kDa
实测分子量	38kDa
形式	Liquid
保存条件	Store at -20°C. Avoid freeze / thaw cycles. Buffer: PBS with 0.01% thiomersal, 50% glycerol, pH7.3.
偶联物	Unconjugated
阳性对照	HL-60
细胞定位	Cell membrane, Cell surface, Multi-pass membrane protein
纯化	Affinity purification

抗原信息

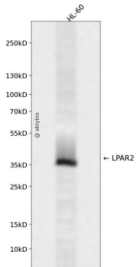
抗原信息	A synthetic peptide corresponding to a sequence within amino acids 250-350 of human LPAR2 (NP_00471 1.2).
序列	FVVCWTPGQVLLLLDGLGCESC NVLAVEKYFLLLAEANSLVNAAVYSCRDAEMRRTFRLLCCACLRQSTRESVHYTSSAQ GGASTRIMLPENGHPLMDST

靶点信息

研究背景	This gene encodes a member of family I of the G protein-coupled receptors, as well as the EDG family of p proteins. This protein functions as a lysophosphatidic acid (LPA) receptor and contributes to Ca ²⁺ mobilization, a critical cellular response to LPA in cells, through association with Gi and Gq proteins. An alternative splice variant has been described but its full length sequence has not been determined.
基因ID	9170

基因名	LPAR2
Swiss	Q9HBW0
别名	LPAR2;EDG-4;EDG4;LPA-2;LPA2

产品验证



Western blot analysis of LPAR2 expressed in HL-60 using LPAR2 Rabbit pAb at 1:1000. Secondary antibody: HRP Goat Anti-Rabbit IgG (H+L) at 1:5000. Lysates/proteins: 30ug per lane. Blocking buffer: 5% non-fat dry milk in TBST. Detection: ECL Enhanced Kit. Exposure time: 120s.

实验步骤

访问官网浏览详情: www.ablybio.cn