

RALGPS1 Rabbit pAb

货号: **AYP18776**

产品信息

反应	Rat
宿主	Rabbit
克隆性	Polyclonal
预测反应	
应用	WB
推荐浓度	WB: 1:500 - 1:2000
理论分子量	11kDa/24kDa/34kDa/43kDa/58kDa/59kDa/62kDa
实测分子量	62kDa
形式	Liquid
保存条件	Store at -20°C. Avoid freeze / thaw cycles. Buffer: PBS with 0.01% thiomersal,50% glycerol,pH7.3.
偶联物	Unconjugated
阳性对照	Rat brain,Rat thymus
细胞定位	Cell membrane,Cytoplasm
纯化	Affinity purification

抗原信息

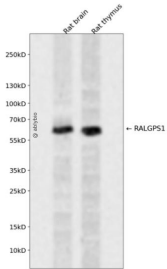
抗原信息	Recombinant fusion protein containing a sequence corresponding to amino acids 1-300 of human RALGPS 1 (NP_055451.1).
序列	MYKRNLMASVLVTSATPQGSSSSDSLEGQSCDYASKSYDAVVFVLDLKVTPPEEFASQITLMDIPVFKAIQPEELASCGWS KKEKHS LAPNVVAFTRRFNQVSWVREILTAQTLKIRAEILSHFVKI AKKLELNNLHSLMSVVSALQSAPIFRLTKTWALLN RKDKTTFEKLDYLSKEDNYKRTREYIRSLKMPVPSIPYLGIIYLLDIYDSAYPASGSIMENEQRSNQMNILRIIADLQVSCSY DHLTTLPHVQKYLKSVRYIEELQKFVEDDNYKLSLRIEPPGSSSPRLVSSKE

靶点信息

研究背景	Guanine nucleotide exchange factor (GEF for the small GTPase RALA. May be involved in cytoskeletal organization (By similarity. Guanine nucleotide exchange factor for.
基因ID	9649

基因名	RALGPS1
Swiss	Q5JS13
别名	RALGPS1;RALGEF2;RALGPS1A

产品验证



Western blot analysis of RALGPS1 expressed in Rat brain,Rat thymus using RALGPS1 Rabbit pAb at 1:1000. Secondary antibody: HRP Goat Anti-Rabbit IgG (H+L) at 1:5000. Lysates/proteins: 30ug per lane. Blocking buffer: 5% non-fat dry milk in TBST. Detection: ECL Enhanced Kit. Exposure time: 120s.

实验步骤

访问官网浏览详情: www.ablybio.cn