

EMC8 Rabbit pAb

货号: **AYP18772**

产品信息

反应	Human,Mouse
宿主	Rabbit
克隆性	Polyclonal
预测反应	
应用	WB
推荐浓度	WB: 1:500 - 1:2000
理论分子量	13kDa/23kDa
实测分子量	24kDa
形式	Liquid
保存条件	Store at -20°C. Avoid freeze / thaw cycles. Buffer: PBS with 0.01% thiomersal,50% glycerol,pH7.3.
偶联物	Unconjugated
阳性对照	A-549,293T,Mouse brain,Mouse heart
细胞定位	Cytoplasm
纯化	Affinity purification

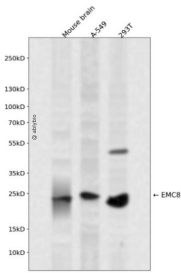
抗原信息

抗原信息	Recombinant fusion protein containing a sequence corresponding to amino acids 1-210 of human EMC8 (NP_006058.1).
序列	MPGVKLTQAYCKMVLHGAKYPHCAVNGLLVAEKQKPRKEHLPLGGPGAHHTLFVDCIPLFHGTLALAPMLEVALTLIDSWCKDHSYVIAGYYQANERVKDASPNQVAEKVASRIAEGFSDTALIMVDNTKFTMDCVAPTIHVYEHENRWRCRDPHHDYCEDWPEAQRISASLLDSRSYETLVDFDNHLDDIRNDWTNPEINKAVLHLC

靶点信息

研究背景	Part of the endoplasmic reticulum membrane protein complex (EMC) that enables the energy-independent insertion into endoplasmic reticulum membranes of newly synthesized membrane proteins. Preferentially accommodates proteins with transmembrane domains that are weakly hydrophobic or contain destabilizing features such as charged and aromatic residues. Involved in the cotranslational insertion of multi-pass membrane proteins in which stop-transfer membrane-anchor sequences become ER membrane spanning helices. It is also required for the post-translational insertion of tail-anchored/TA proteins in endoplasmic reticulum membranes. By mediating the proper cotranslational insertion of N-terminal transmembrane domains in an N-exo topology, with translocated N-terminus in the lumen of the ER, controls the topology of multi-pass membrane proteins like the G protein-coupled receptors. By regulating the insertion of various proteins in membranes, it is indirectly involved in many cellular processes (Probable).
基因ID	10328
基因名	EMC8
Swiss	O43402
别名	EMC8;C16orf2;C16orf4;COX4NB;FAM158B;NOC4

产品验证



Western blot analysis of EMC8 expressed in Mouse brain, A-549, 293T using EMC8 Rabbit pAb at 1:1000. Secondary antibody: HRP Goat Anti-Rabbit IgG (H+L) at 1:5000. Lysates/proteins: 30ug per lane. Blocking buffer: 5% non-fat dry milk in TBST. Detection: ECL Enhanced Kit. Exposure time: 120s.

实验步骤

访问官网浏览详情: www.ablybio.cn