

# CGREF1 Rabbit pAb

货号: **AYP18770**

## 产品信息

反应	Mouse,Rat
宿主	Rabbit
克隆性	Polyclonal
预测反应	
应用	WB
推荐浓度	<b>WB:</b> 1:500 - 1:2000
理论分子量	11kDa/14kDa/31kDa/33kDa/47kDa
实测分子量	32kDa
形式	Liquid
保存条件	Store at -20°C. Avoid freeze / thaw cycles. Buffer: PBS with 0.01% thiomersal,50% glycerol,pH7.3.
偶联物	Unconjugated
阳性对照	Mouse kidney,Mouse heart
细胞定位	Secreted
纯化	Affinity purification

## 抗原信息

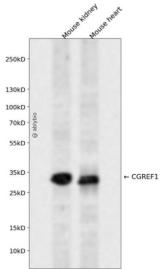
抗原信息	Recombinant fusion protein containing a sequence corresponding to amino acids 20-200 of human CGREF 1 (NP_006560.3).
序列	APKDGVTRPDSEVQHQLLPNPFQPGQEQLGLLQSYLKGLGRTEVQLEHLSREQVLLYLFALHDYDQSGQLDGLELLSMLT AALAPGAANSPTTNPVILIVDKVLETQDLNGDGLMTPAELINFPGVALRHVEPGEPLAPSPQEPQAVGRQSLAKSPLRQET QEAPGPREEAKGQVEARRE

## 靶点信息

研究背景	Mediates cell-cell adhesion in a calcium-dependent manner (By similarity. Able to inhibit growth in several cell lines.
基因ID	10669

基因名	CGREF1
Swiss	Q99674
别名	CGREF1;CGR11

## 产品验证



Western blot analysis of CGREF1 expressed in Mouse kidney, Mouse heart using CGREF1 Rabbit pAb at 1:1000. Secondary antibody: HRP Goat Anti-Rabbit IgG (H+L) at 1:5000. Lysates/proteins: 30ug per lane. Blocking buffer: 5% non-fat dry milk in TBST. Detection: ECL Enhanced Kit. Exposure time: 120s.

## 实验步骤

访问官网浏览详情: [www.ablybio.cn](http://www.ablybio.cn)