

CEP68 Rabbit pAb

货号: **AYP18761**

产品信息

反应	Human,Mouse,Rat
宿主	Rabbit
克隆性	Polyclonal
预测反应	
应用	WB
推荐浓度	WB: 1:500 - 1:2000
理论分子量	67kDa/81kDa
实测分子量	76kDa
形式	Liquid
保存条件	Store at -20°C. Avoid freeze / thaw cycles. Buffer: PBS with 0.01% thiomersal,50% glycerol,pH7.3.
偶联物	Unconjugated
阳性对照	U-251MG,Mouse brain,Rat kidney
细胞定位	Cytoplasm,centrosome,cytoskeleton,microtubule organizing center
纯化	Affinity purification

抗原信息

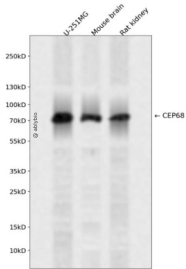
抗原信息	Recombinant fusion protein containing a sequence corresponding to amino acids 1-350 of human CEP68 (NP_001306030.1).
序列	MALGEEKAEAEASEDTKAQSYGRGSCRERELDIPGMSGEQPPRLEAEGGLISPVWGAEGIPAPTCWIGTDPGGPSRAHQ PQASDANREPVAERSEPALSGLPPATMGSGDLLLSGESQVEKTKLSSSEFFPQTLSPRTTTCISGHDADTEDDPSLADLP QALDLSQQPHSSGLSCLSQWKSVLSPGSAAPSSCSISASSTGSSLQGHQERAEPGGSLAKVSSSLEPVVPQEPSSVV GLGPRPQWSPQPVFSGGDASGLGRRRLSFQAEYWACVLPDSLPPSPDRHSPLWNPKEYEDLLDYTYPLRPGPQLPKHL DSRVPADPVLQDSGVDLDSFSVSPASTLKSP

靶点信息

研究背景	Involved in maintenance of centrosome cohesion, probably as part of a linker structure which prevents centrosome splitting. Required for localization of CDK5RAP2 to the centrosome during interphase.
基因ID	23177

基因名	CEP68
Swiss	Q76N32
别名	CEP68;KIAA0582

产品验证



Western blot analysis of CEP68 expressed in U-251MG, Mouse brain, Rat kidney using CEP68 Rabbit pAb at 1:1000. Secondary antibody: HRP Goat Anti-Rabbit IgG (H+L) at 1:5000. Lysates/proteins: 30ug per lane. Blocking buffer: 5% non-fat dry milk in TBST. Detection: ECL Enhanced Kit. Exposure time: 120s.

实验步骤

访问官网浏览详情: www.ablybio.cn