

# KLHL8 Rabbit pAb

货号: **AYP18728**

## 产品信息

反应	Human,Mouse,Rat
宿主	Rabbit
克隆性	Polyclonal
预测反应	
应用	WB IF/ICC
推荐浓度	<b>WB:</b> 1:500 - 1:2000 <b>IF/ICC:</b> 1:50 - 1:200
理论分子量	60kDa/68kDa
实测分子量	69kDa
形式	Liquid
保存条件	Store at -20°C. Avoid freeze / thaw cycles. Buffer: PBS with 0.01% thiomersal,50% glycerol,pH7.3.
偶联物	Unconjugated
阳性对照	293T,Mouse brain,Mouse kidney,Rat thymus
细胞定位	nucleoplasm
纯化	Affinity purification

## 抗原信息

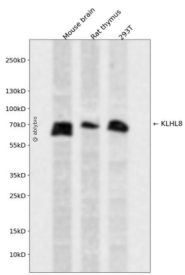
抗原信息	Recombinant fusion protein containing a sequence corresponding to amino acids 271-620 of human KLHL8 (NP_065854.3).
序列	AKEQIVKQNLKCRDLLDEARNYHLHLSSRAVPDFEYSIRTPRKHTAGVLFVCGGRGGSGDPFRSIECYSINKNSWFFGPE MNSRRRHVGVISVEGKVYAVGGHDGNEHLGSMEMFDPLTNKWMKASMNTRRRIALASLGGPIYAIGGLDDNTCFND VERYDIESDQWSTVAPMNTPRGGVGSVALVNHVYAVGGNDGMASLSSVERYDPHLDKWIEVKEMGQRRAGNGVSKLH GCLYVVGFFDDNSPLSSVERYDPRSNKWDYVAALTPRGGVGIATVMGKIFAVGGHNGNAYLNTVEAFDPVLRWELV GSVSHCRAGAGVAVCSCLTSQIRDVGHGSNNVDCM

## 靶点信息

研究背景	Substrate-specific adapter of a BCR (BTB-CUL3-RBX1 E3 ubiquitin ligase complex required for The BCR(KLHL8 ubiquitin ligase complex mediates ubiquitination and degradation of RAPSIN).
------	--

基因ID	57563
基因名	KLHL8
Swiss	Q9P2G9
别名	KLHL8

## 产品验证



Western blot analysis of KLHL8 expressed in Mouse brain, Rat thymus, 293T using KLHL8 Rabbit pAb at 1:1000. Secondary antibody: HRP Goat Anti-Rabbit IgG (H+L) at 1:5000. Lysates/proteins: 30ug per lane. Blocking buffer: 5% non-fat dry milk in TBST. Detection: ECL Enhanced Kit. Exposure time: 120s.

## 实验步骤

访问官网浏览详情: [www.ablybio.cn](http://www.ablybio.cn)