

# PPP1R3B Rabbit pAb

货号: **AYP18719**

## 产品信息

反应	Mouse,Rat
宿主	Rabbit
克隆性	Polyclonal
预测反应	
应用	WB
推荐浓度	<b>WB:</b> 1:500 - 1:2000
理论分子量	32kDa
实测分子量	33kDa
形式	Liquid
保存条件	Store at -20°C. Avoid freeze / thaw cycles. Buffer: PBS with 0.01% thiomersal,50% glycerol,pH7.3.
偶联物	Unconjugated
阳性对照	Mouse heart,Rat brain,Rat kidney
细胞定位	glycogen granule,protein phosphatase type 1 complex
纯化	Affinity purification

## 抗原信息

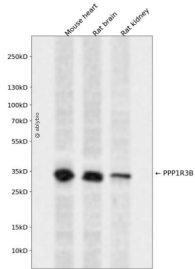
抗原信息	Recombinant fusion protein containing a sequence corresponding to amino acids 1-140 of human PPP1R3 B (NP_078883.2).
序列	MMAVDIEYRYNCMAPSLRQERFAFKISPKPSKPLRPCIQLSSKNEASGMVAPAVQEKKVKRVSFADNQGLALTMVKVFSE FDDPLDMPFNITELLDNIVSLTTAESESFVLDIFSQPSADYLDNRNLQADHVCLENCVL

## 靶点信息

研究背景	This gene encodes the catalytic subunit of the serine/threonine phosphatase, protein phosphatase-1. The encoded protein is expressed in liver and skeletal muscle tissue and may be involved in regulating glycogen synthesis in these tissues. This gene may be involved in type 2 diabetes and maturity-onset diabetes of the young. Alternate splicing results in multiple transcript variants that encode the same protein.
基因ID	79660

基因名	PPP1R3B
Swiss	Q86XI6
别名	PPP1R3B;GL;PPP1R4;PTG

## 产品验证



Western blot analysis of PPP1R3B expressed in Mouse heart,Rat brain,Rat kidney using PPP1R3B Rabbit pAb at 1:1000. Secondary antibody: HRP Goat Anti-Rabbit IgG (H+L) at 1:5000. Lysates/proteins: 30ug per lane. Blocking buffer: 5% non-fat dry milk in TBST. Detection: ECL Enhanced Kit. Exposure time: 120s.

## 实验步骤

访问官网浏览详情: [www.ablybio.cn](http://www.ablybio.cn)