

ZSWIM1 Rabbit pAb

货号: **AYP18711**

产品信息

反应	Mouse
宿主	Rabbit
克隆性	Polyclonal
预测反应	
应用	WB
推荐浓度	WB: 1:500 - 1:2000
理论分子量	55kDa
实测分子量	55kDa
形式	Liquid
保存条件	Store at -20°C. Avoid freeze / thaw cycles. Buffer: PBS with 0.01% thiomersal, 50% glycerol, pH7.3.
偶联物	Unconjugated
阳性对照	Mouse kidney
细胞定位	nucleus
纯化	Affinity purification

抗原信息

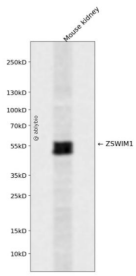
抗原信息	Recombinant fusion protein containing a sequence corresponding to amino acids 411-485 of human ZSWIM1 (NP_542170.3).
序列	DMLPAQWTAGCATSLDSILGSKWSETLDKHLAVTHLTEEVGQLLQHCTKEEFERRYSTLRELADSWIGPYEQVQL

靶点信息

研究背景	Predicted to enable zinc ion binding activity. Predicted to be located in nucleus.
基因ID	90204
基因名	ZSWIM1
Swiss	Q9BR11

别名	ZSWIM1;C20orf162
----	------------------

产品验证



Western blot analysis of ZSWIM1 expressed in Mouse kidney using ZSWIM1 Rabbit pAb at 1:1000. Second ary antibody: HRP Goat Anti-Rabbit IgG (H+L) at 1:5000. Lysates/proteins: 30ug per lane. Blocking buffer: 5% non-fat dry milk in TBST. Detection: ECL Enhanced Kit. Exposure time: 120s.

实验步骤

访问官网浏览详情: www.ablybio.cn