

LDHAL6B Rabbit pAb

货号: **AYP18710**

产品信息

反应	Mouse,Rat
宿主	Rabbit
克隆性	Polyclonal
预测反应	
应用	WB IF/ICC
推荐浓度	WB: 1:500 - 1:2000 IF/ICC: 1:50 - 1:200
理论分子量	41kDa
实测分子量	42kDa
形式	Liquid
保存条件	Store at -20°C. Avoid freeze / thaw cycles. Buffer: PBS with 0.01% thiomersal,50% glycerol,pH7.3.
偶联物	Unconjugated
阳性对照	Mouse testis,Rat kidney
细胞定位	cytoplasm,mitochondrial matrix,nucleus
纯化	Affinity purification

抗原信息

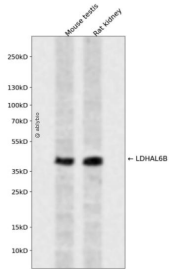
抗原信息	Recombinant fusion protein containing a sequence corresponding to amino acids 1-80 of human LDHAL6B (NP_149972.1).
序列	MSWTVPVVRASQRVSSVGANFLCLGMALCPRQATRIPLNGTWLFTPVSKMATVKSELIERTSEKPVHHSKVSIIIGTSV

靶点信息

研究背景	Predicted to enable L-lactate dehydrogenase activity. Predicted to be involved in pyruvate metabolic process. Located in nucleus.
基因ID	92483
基因名	LDHAL6B

Swiss	Q9BYZ2
别名	LDHAL6B;LDH6B;LDHAL6;LDHL

产品验证



Western blot analysis of LDHAL6B expressed in Mouse testis,Rat kidney using LDHAL6B Rabbit pAb at 1:1 000. Secondary antibody: HRP Goat Anti-Rabbit IgG (H+L) at 1:5000. Lysates/proteins: 30ug per lane. Bl ocking buffer: 5% non-fat dry milk in TBST. Detection: ECL Enhanced Kit. Exposure time: 120s.

实验步骤

访问官网浏览详情: www.ablybio.cn