

PKD1L2 Rabbit pAb

货号: **AYP18705**

产品信息

反应	Mouse
宿主	Rabbit
克隆性	Polyclonal
预测反应	
应用	WB
推荐浓度	WB: 1:500 - 1:2000
理论分子量	26kDa/32kDa/107kDa/197kDa/272kDa
实测分子量	33kDa
形式	Liquid
保存条件	Store at -20°C. Avoid freeze / thaw cycles. Buffer: PBS with 0.01% thiomersal, 50% glycerol, pH7.3.
偶联物	Unconjugated
阳性对照	Mouse lung
细胞定位	Membrane, Multi-pass membrane protein
纯化	Affinity purification

抗原信息

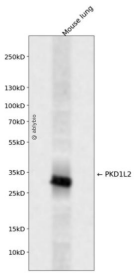
抗原信息	Recombinant fusion protein containing a sequence corresponding to amino acids 1-306 of human PKD1L2 (NP_001265352.1).
序列	MGEDSPVAMFSWYLDNTPTEQAEPLLDACRLRGFWPRSLTLLQSNTSTLLNSSFLQSRGEVIRIRATALTRHAYGEDTYVI STVPPREVPACTIAPEEGTVLTSFAIFCNASTALGPLFCFCLESGSCLHCGPEPALPSVYLPLGEENNDVLTWVISATNRAG DTQQTQAMAKVALGDTCVEDVAFQAAVSEKIPTALQGEGGPEQLQLAKAVSSMLNQEHEHQSGSQSLSIDVRQKVRE HVLGSLSAVTTGLEVDVQRVQELAEVLRVTCRSKELTPSAQGSCMGDSWEGAPPAHVSHAR

靶点信息

研究背景	This gene encodes a member of the polycystin protein family. The encoded protein contains 11 transmembrane domains, a latrophilin/CL-1-like GPCR proteolytic site (GPS) domain, and a polycystin-1, lipoxigenase, alpha-toxin (PLAT) domain. This protein may function as a component of cation channel pores. This gene appears to be a polymorphic pseudogene in humans, where some individuals contain a non-functional allele. Alternative splicing results in multiple transcript variants.
------	--

基因ID	114780
基因名	PKD1L2
Swiss	Q7Z442
别名	PKD1L2;PC1L2

产品验证



Western blot analysis of PKD1L2 expressed in Mouse lung using PKD1L2 Rabbit pAb at 1:1000. Secondary antibody: HRP Goat Anti-Rabbit IgG (H+L) at 1:5000. Lysates/proteins: 30ug per lane. Blocking buffer: 5% non-fat dry milk in TBST. Detection: ECL Enhanced Kit. Exposure time: 120s.

实验步骤

访问官网浏览详情: www.ablybio.cn