

GLB1L3 Rabbit pAb

货号: **AYP18704**

产品信息

反应	Human,Mouse,Rat
宿主	Rabbit
克隆性	Polyclonal
预测反应	
应用	WB
推荐浓度	WB: 1:500 - 1:2000
理论分子量	35kDa/74kDa
实测分子量	75kDa
形式	Liquid
保存条件	Store at -20°C. Avoid freeze / thaw cycles. Buffer: PBS with 0.01% thiomersal,50% glycerol,pH7.3.
偶联物	Unconjugated
阳性对照	SH-SY5Y,Mouse testis,Mouse brain,Mouse lung,Rat testis,Rat brain
细胞定位	lysosome
纯化	Affinity purification

抗原信息

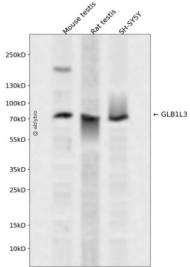
抗原信息	Recombinant fusion protein containing a sequence corresponding to amino acids 180-290 of human GLB1L3 (NP_001073876.2).
序列	QDPRLRLRTTNKSFIEAVEKYFDHLIPRVIPLQYRQAGPVIQVENEYGSFNKDKTYMPYLHKALLRRGIVELLTSDGEKHYLSGHTKGVLAAILNLQKLHQDTFNQLHK

靶点信息

研究背景	Predicted to enable beta-galactosidase activity. Predicted to be involved in carbohydrate metabolic process. Predicted to be active in vacuole.
基因ID	112937
基因名	GLB1L3

Swiss	Q8NCI6
别名	GLB1L3

产品验证



Western blot analysis of GLB1L3 expressed in Mouse testis,Rat testis,SH-SY5Y using GLB1L3 Rabbit pAb at 1:1000. Secondary antibody: HRP Goat Anti-Rabbit IgG (H+L) at 1:5000. Lysates/proteins: 30ug per lane. Blocking buffer: 5% non-fat dry milk in TBST. Detection: ECL Enhanced Kit. Exposure time: 120s.

实验步骤

访问官网浏览详情: www.ablybio.cn