

# SLCO6A1 Rabbit pAb

货号: **AYP18696**

## 产品信息

反应	Human,Mouse,Rat
宿主	Rabbit
克隆性	Polyclonal
预测反应	
应用	WB
推荐浓度	<b>WB:</b> 1:500 - 1:2000
理论分子量	51kDa/72kDa/79kDa
实测分子量	80kDa
形式	Liquid
保存条件	Store at -20°C. Avoid freeze / thaw cycles. Buffer: PBS with 0.01% thiomersal,50% glycerol,pH7.3.
偶联物	Unconjugated
阳性对照	SH-SY5Y,293T,A-549,NCI-H460,Mouse brain
细胞定位	Cell membrane,Multi-pass membrane protein
纯化	Affinity purification

## 抗原信息

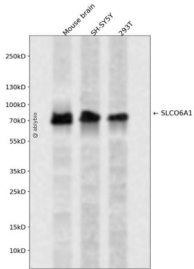
抗原信息	Recombinant fusion protein containing a sequence corresponding to amino acids 480-580 of human SLCO6A1 (NP_775759.3).
序列	VQFAGINEDYDGTGKLGNLTPCNEKCRCSSEIYSSICGRDDIEYFSPCFAGCTYSKAQNQKKMYNCSCIKEGLITADAEGDFIDARPGKCDACKCYKLPL

## 靶点信息

研究背景	Predicted to enable sodium-independent organic anion transmembrane transporter activity. Predicted to be involved in sodium-independent organic anion transport. Predicted to be located in plasma membrane . Predicted to be integral component of membrane. Predicted to be integral component of plasma membrane.
基因ID	133482

基因名	SLCO6A1
Swiss	Q86UG4
别名	SLCO6A1;CT48;GST;OATP-I;OATP6A1;OATPY

## 产品验证



Western blot analysis of SLCO6A1 expressed in Mouse brain,SH-SY5Y,293T using SLCO6A1 Rabbit pAb at 1:1000. Secondary antibody: HRP Goat Anti-Rabbit IgG (H+L) at 1:5000. Lysates/proteins: 30ug per lane. Blocking buffer: 5% non-fat dry milk in TBST. Detection: ECL Enhanced Kit. Exposure time: 120s.

## 实验步骤

访问官网浏览详情: [www.ablybio.cn](http://www.ablybio.cn)