

LDHC Rabbit pAb

货号: **AYP18680**

产品信息

反应	Human,Mouse,Rat
宿主	Rabbit
克隆性	Polyclonal
预测反应	
应用	WB IF/ICC
推荐浓度	WB: 1:500 - 1:2000 IF/ICC: 1:50 - 1:100
理论分子量	36kDa
实测分子量	36kDa
形式	Liquid
保存条件	Store at -20°C. Avoid freeze / thaw cycles. Buffer: PBS with 0.01% thiomersal,50% glycerol,pH7.3.
偶联物	Unconjugated
阳性对照	HeLa,A549,Mouse lung,Rat brain
细胞定位	Cytoplasm
纯化	Affinity purification

抗原信息

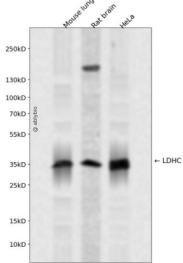
抗原信息	A synthetic peptide corresponding to a sequence within amino acids 150-250 of human LDHC (NP_002292.1).
序列	ISGLPVTRVIGSGCNLDSARFRYLIGEKLVHPTSCHGWIIGEHGDSSVPLWSGVNVAGVALKTLDPKLGTDSDKEHWKN IHKQVIQSAYEIIKLGYSW

靶点信息

研究背景	Lactate dehydrogenase C catalyzes the conversion of L-lactate and NAD to pyruvate and NADH in the final step of anaerobic glycolysis. LDHC is testis-specific and belongs to the lactate dehydrogenase family. Two transcript variants have been detected which differ in the 5' untranslated region.
基因ID	3948

基因名	LDHC
Swiss	P07864
别名	LDHC;CT32;LDH3;LDHX

产品验证



Western blot analysis of LDHC expressed in Mouse lung,Rat brain,HeLa using LDHC Rabbit pAb at 1:1000. Secondary antibody: HRP Goat Anti-Rabbit IgG (H+L) at 1:5000. Lysates/proteins: 30ug per lane. Blocking buffer: 5% non-fat dry milk in TBST. Detection: ECL Enhanced Kit. Exposure time: 120s.

实验步骤

访问官网浏览详情: www.ablybio.cn