

LTB4R Rabbit pAb

货号: **AYP18667**

产品信息

反应	Mouse,Rat
宿主	Rabbit
克隆性	Polyclonal
预测反应	
应用	WB
推荐浓度	WB: 1:500 - 1:1000
理论分子量	37kDa
实测分子量	38KDa
形式	Liquid
保存条件	Store at -20°C. Avoid freeze / thaw cycles. Buffer: PBS with 0.01% thiomersal,50% glycerol,pH7.3.
偶联物	Unconjugated
阳性对照	Mouse skeletal muscle,Rat skeletal muscle
细胞定位	Cell membrane,Multi-pass membrane protein
纯化	Affinity purification

抗原信息

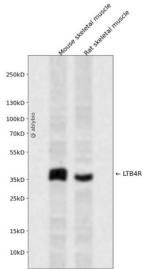
抗原信息	A synthetic peptide corresponding to a sequence within amino acids 250-352 of human LTB4R (NP_001137391.1).
序列	AGQAAGLGLVGKRLSLARNVLIALAFLLSSVNPVLYACAGGGLLRSGVGFVAKLLEGTGSEASSTRGGSLGQTARSGPAALEPGPSESLTASSPLKLNELN

靶点信息

研究背景	Receptor for extracellular ATP > UTP and ADP. The activity of this receptor is mediated by G proteins which activate a phosphatidylinositol-calcium second messenger system. May be the cardiac P2Y receptor involved in the regulation of cardiac muscle contraction through modulation of L-type calcium currents. Is a receptor for leukotriene B4, a potent chemoattractant involved in inflammation and immune response.
基因ID	1241

基因名	LTB4R
Swiss	Q15722
别名	LTB4R;BLT1;BLTR;CMKRL1;GPR16;LTB4R1;LTBR1;P2RY7;P2Y7

产品验证



Western blot analysis of LTB4R expressed in Mouse skeletal muscle,Rat skeletal muscle using LTB4R Rabbit pAb at 1:1000. Secondary antibody: HRP Goat Anti-Rabbit IgG (H+L) at 1:5000. Lysates/proteins: 30ug per lane. Blocking buffer: 5% non-fat dry milk in TBST. Detection: ECL Enhanced Kit. Exposure time: 120s.

实验步骤

访问官网浏览详情: www.ablybio.cn