

PDE1C Rabbit pAb

货号: **AYP18652**

产品信息

反应	Human,Mouse,Rat
宿主	Rabbit
克隆性	Polyclonal
预测反应	
应用	WB
推荐浓度	WB: 1:500 - 1:2000
理论分子量	72kDa/80kDa/86kDa
实测分子量	81kDa
形式	Liquid
保存条件	Store at -20°C. Avoid freeze / thaw cycles. Buffer: PBS with 0.01% thiomersal,50% glycerol,pH7.3.
偶联物	Unconjugated
阳性对照	HepG2,mouse heart,mouse brain,mouse testis,rat heart,rat brain,rat testis
细胞定位	cytosol,lysosome
纯化	Affinity purification

抗原信息

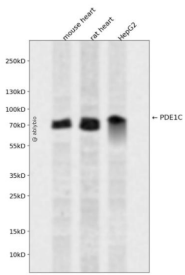
抗原信息	Recombinant fusion protein containing a sequence corresponding to amino acids 435-634 of human PDE1 C (NP_001177985.1).
序列	VEPTFTVLDMTEKIVSPLIDETSQTGGTGQRRSSLNSISSSDAKRSGVKTSGSEGSAPINNSVISVDYKSFKATWTEVWHI NRERWRRAKVPKEEKAKKEAEKARLAAEEQKEMEAKSQAEEGASGKAEKKTSGETKNQVNGTRANKSDNPRGKNSKA EKSSGEQQNGDFKDGKKNKTDKKDHSNIGNDSKKTDDSQE

靶点信息

研究背景	This gene encodes an enzyme that belongs to the 3'5'-cyclic nucleotide phosphodiesterase family. Members of this family catalyze hydrolysis of the cyclic nucleotides, cyclic adenosine monophosphate and cyclic guanosine monophosphate, to the corresponding nucleoside 5'-monophosphates. The enzyme encoded by this gene regulates proliferation and migration of vascular smooth muscle cells, and neointimal hyperplasia. This enzyme also plays a role in pathological vascular remodeling by regulating the stability of growth factor receptors, such as PDGF-receptor-beta.
------	---------------------------------------------------------------------------------------------------------------------------------------------------------------------------------------------------------------------------------------------------------------------------------------------------------------------------------------------------------------------------------------------------------------------------------------------------------------------------------------------------------------------------------------------------------------------------------------

基因ID	5137
基因名	PDE1C
Swiss	Q14123
别名	PDE1C;Hcam3;cam-PDE 1C;hCam-3;cam-PDE1C

产品验证



Western blot analysis of PDE1C expressed in mouse heart, rat heart, HepG2 using PDE1C Rabbit pAb at 1:1000. Secondary antibody: HRP Goat Anti-Rabbit IgG (H+L) at 1:5000. Lysates/proteins: 30ug per lane. Blocking buffer: 5% non-fat dry milk in TBST. Detection: ECL Enhanced Kit. Exposure time: 120s.

实验步骤

访问官网浏览详情: www.ablybio.cn