

PTGFR Rabbit pAb

货号: **AYP18646**

产品信息

反应	Mouse,Rat
宿主	Rabbit
克隆性	Polyclonal
预测反应	
应用	WB
推荐浓度	WB: 1:500 - 1:2000
理论分子量	29kDa/30kDa/32kDa/33kDa/40kDa
实测分子量	40kDa
形式	Liquid
保存条件	Store at -20°C. Avoid freeze / thaw cycles. Buffer: PBS with 0.01% thiomersal,50% glycerol,pH7.3.
偶联物	Unconjugated
阳性对照	mouse liver,mouse brain,rat brain
细胞定位	Cell membrane,Multi-pass membrane protein
纯化	Affinity purification

抗原信息

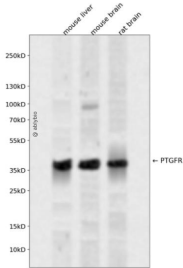
抗原信息	A synthetic peptide corresponding to a sequence within amino acids 50-150 of human PTGFR (NP_000950.1).
序列	ILMKAYQFRQKSKASFLLLASGLVITDFFGHLINGAIAVFVYASDKEWIRFDQSNVLCISIFGICMVFSGLCPLLLGSVMAIER CIGVTKPIFHSTKITSK

靶点信息

研究背景	The protein encoded by this gene is member of the G-protein coupled receptor family. This protein is a receptor for prostaglandin F2-alpha (PGF2-alpha), which is known to be a potent luteolytic agent, and may also be involved in modulating intraocular pressure and smooth muscle contraction in uterus. Knockout studies in mice suggest that the interaction of PGF2-alpha with this receptor may initiate parturition in ovarian luteal cells and thus induce luteolysis. Two transcript variants encoding different isoforms have been found for this gene.
------	--

基因ID	5737
基因名	PTGFR
Swiss	P43088
别名	PTGFR;FP

产品验证



Western blot analysis of PTGFR expressed in mouse liver, mouse brain, rat brain using PTGFR Rabbit pAb at 1:1000. Secondary antibody: HRP Goat Anti-Rabbit IgG (H+L) at 1:5000. Lysates/proteins: 30ug per lane. Blocking buffer: 5% non-fat dry milk in TBST. Detection: ECL Enhanced Kit. Exposure time: 120s.

实验步骤

访问官网浏览详情: www.ablybio.cn