

# RPS26 Rabbit pAb

货号: **AYP18644**

## 产品信息

反应	Human,Mouse,Rat
宿主	Rabbit
克隆性	Polyclonal
预测反应	
应用	WB
推荐浓度	<b>WB:</b> 1:500 - 1:2000
理论分子量	13kDa
实测分子量	15kDa
形式	Liquid
保存条件	Store at -20°C. Avoid freeze / thaw cycles. Buffer: PBS with 0.01% thiomersal,50% glycerol,pH7.3.
偶联物	Unconjugated
阳性对照	U-251MG,LO2,Raji,DU145,mouse brain,mouse heart,mouse kidney,mouse liver
细胞定位	cytoplasm,cytosol,extracellular exosome,nucleoplasm
纯化	Affinity purification

## 抗原信息

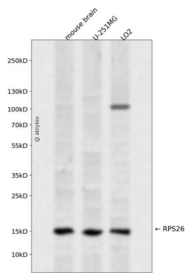
抗原信息	A synthetic peptide corresponding to a sequence within amino acids 1-100 of human RPS26 (NP_001020.2).
序列	MTKKRRNNGRAKKGRGHVQPIRCTNCARCVPKDKAIKKFVIRNIVEAAAVRDISEASVFDAYVLPKLYVKLHYCVSCAIHSKVVRNRSREARKDRTPPPR

## 靶点信息

研究背景	Ribosomes, the organelles that catalyze protein synthesis, consist of a small 40S subunit and a large 60S subunit. Together these subunits are composed of 4 RNA species and approximately 80 structurally distinct proteins. This gene encodes a ribosomal protein that is a component of the 40S subunit. The protein belongs to the S26E family of ribosomal proteins. It is located in the cytoplasm. As is typical for genes encoding ribosomal proteins, there are multiple processed pseudogenes of this gene dispersed through the genome.
------	--

基因ID	6231
基因名	RPS26
Swiss	P62854
别名	RPS26;DBA10;S26

## 产品验证



Western blot analysis of RPS26 expressed in mouse brain,U-251MG,LO2 using RPS26 Rabbit pAb at 1:1 000. Secondary antibody: HRP Goat Anti-Rabbit IgG (H+L) at 1:5000. Lysates/proteins: 30ug per lane. B locking buffer: 5% non-fat dry milk in TBST. Detection: ECL Enhanced Kit. Exposure time: 120s.

## 实验步骤

访问官网浏览详情: [www.ablybio.cn](http://www.ablybio.cn)