

RPL28 Rabbit pAb

货号: **AYP18643**

产品信息

反应	Human,Mouse,Rat
宿主	Rabbit
克隆性	Polyclonal
预测反应	
应用	WB IF/ICC
推荐浓度	WB: 1:500 - 1:2000 IF/ICC: 1:50 - 1:200
理论分子量	7kDa/10kDa/15kDa/18kDa/19kDa
实测分子量	16kDa
形式	Liquid
保存条件	Store at -20°C. Avoid freeze / thaw cycles. Buffer: PBS with 0.01% thiomersal,50% glycerol,pH7.3.
偶联物	Unconjugated
阳性对照	HT-29,293T,DU145,mouse kidney,mouse liver,rat spleen
细胞定位	cytoplasm,cytoplasmic ribonucleoprotein granule,cytosol,cytosolic ribosome,dendrite,extracellular exosome,synapse
纯化	Affinity purification

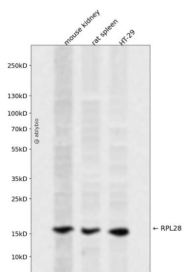
抗原信息

抗原信息	A synthetic peptide corresponding to a sequence within amino acids 1-100 of human RPL28 (NP_000982.2).
序列	MSAHLQWMVVRNCSSFLIKRNKQTYSTEPNNLKARNSFRYNGLIHRKTVGVPEAADGKGVVVVIKRRSGQRKPATSYVRT TINKNARATLSSIRHMIRKN

靶点信息

研究背景	Ribosomes, the organelles that catalyze protein synthesis, consist of a small 40S subunit and a large 60S subunit. Together these subunits are composed of 4 RNA species and approximately 80 structurally distinct proteins. This gene encodes a ribosomal protein that is a component of the 60S subunit. The protein belongs to the L28E family of ribosomal proteins. It is located in the cytoplasm. Variable expression of this gene in colorectal cancers compared to adjacent normal tissues has been observed, although no correlation between the level of expression and the severity of the disease has been found. As is typical for genes encoding ribosomal proteins, there are multiple processed pseudogenes of this gene dispersed throughout the genome. Alternative splicing results in multiple transcript variants encoding distinct isoforms.
基因ID	6158
基因名	RPL28
Swiss	P46779
别名	RPL28;L28

产品验证



Western blot analysis of RPL28 expressed in mouse kidney, rat spleen, HT-29 using RPL28 Rabbit pAb at 1:1000. Secondary antibody: HRP Goat Anti-Rabbit IgG (H+L) at 1:5000. Lysates/proteins: 30ug per lane. Blocking buffer: 5% non-fat dry milk in TBST. Detection: ECL Enhanced Kit. Exposure time: 120s.

实验步骤

访问官网浏览详情: www.ablybio.cn