

# RHD Rabbit pAb

货号: **AYP18642**

## 产品信息

|       |  |
|-------|--|
| 反应    | Human,Rat  |
| 宿主    | Rabbit   |
| 克隆性   | Polyclonal   |
| 预测反应  |  |
| 应用    | WB   |
| 推荐浓度  | <b>WB:</b> 1:500 - 1:2000  |
| 理论分子量 | 34kDa/41kDa/43kDa/45kDa/53kDa  |
| 实测分子量 | 36kDa  |
| 形式    | Liquid   |
| 保存条件  | Store at -20°C. Avoid freeze / thaw cycles.<br>Buffer: PBS with 0.01% thiomersal,50% glycerol,pH7.3. |
| 偶联物   | Unconjugated   |
| 阳性对照  | U-251MG,LO2,rat spleen,rat liver   |
| 细胞定位  | Membrane,Multi-pass membrane protein   |
| 纯化    | Affinity purification  |

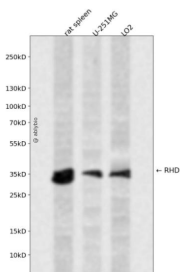
## 抗原信息

|      |  |
|------|--|
| 抗原信息 | A synthetic peptide corresponding to a sequence within amino acids 150-250 of human RHD (NP_001121 163.1). |
| 序列   | LGNLRMVISNIFNTDYHMNMHIYVFAAYFGLSVAVWCLPKPLPEGTEKDQTATIPSLSAMLGALFLWMFWPSFNSALLR<br>SPIERKNAVFNTYYAVAVSVV   |

## 靶点信息

|       |   |
|-------|---|
| 研究背景  | The Rh blood group system is the second most clinically significant of the blood groups, second only to ABO. It is also the most polymorphic of the blood groups, with variations due to deletions, gene conversions, and missense mutations. The Rh blood group includes this gene, which encodes the RhD protein, and a second gene that encodes both the RhC and RhE antigens on a single polypeptide. The two genes, and a third unrelated gene, are found in a cluster on chromosome 1. The classification of Rh-positive and Rh-negative individuals is determined by the presence or absence of the highly immunogenic RhD protein on the surface of erythrocytes. Multiple transcript variants encoding different isoforms have been found for this gene. |
| 基因ID  | 6007  |
| 基因名   | RHD   |
| Swiss | Q02161  |
| 别名    | RHD;CD240D;DIIC;RH;RH30;RHCED;RHDVA(TT);RHDel;RHPII;RHXIII;Rh4;RhDCw;RhII;RhK562-II;RhPI  |

## 产品验证



Western blot analysis of RHD expressed in rat spleen, U-251MG, LO2 using RHD Rabbit pAb at 1:1000. Secondary antibody: HRP Goat Anti-Rabbit IgG (H+L) at 1:5000. Lysates/proteins: 30ug per lane. Blocking buffer: 5% non-fat dry milk in TBST. Detection: ECL Enhanced Kit. Exposure time: 120s.

## 实验步骤

访问官网浏览详情: [www.ablybio.cn](http://www.ablybio.cn)