

TBL1X Rabbit pAb

货号: AYP18640

产品信息

| | |
|-------|--|
| 反应 | Human,Mouse,Rat |
| 宿主 | Rabbit |
| 克隆性 | Polyclonal |
| 预测反应 | |
| 应用 | WB |
| 推荐浓度 | WB: 1:500 - 1:2000 |
| 理论分子量 | 57kDa/62kDa |
| 实测分子量 | 60kDa |
| 形式 | Liquid |
| 保存条件 | Store at -20°C. Avoid freeze / thaw cycles. Buffer: PBS with 0.01% thiomersal,50% glycerol,pH7.3. |
| 偶联物 | Unconjugated |
| 阳性对照 | BxPC-3,HeLa,mouse brain,mouse lung |
| 细胞定位 | Nucleus |
| 纯化 | Affinity purification |

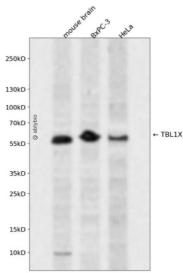
抗原信息

| | |
|------|--|
| 抗原信息 | A synthetic peptide corresponding to a sequence within amino acids 100-200 of human TBL1X (NP_005638.1). |
| 序列 | LISILQKGLQYVEAEISINEDGTVFDGRPIESLSLIDAVMPDVVQTRQQAFREKLAQQASAAAAAATAAATAATTTAGVSHQNPSKNREATVNGEEN |

靶点信息

| | |
|-------|--|
| 研究背景 | The protein encoded by this gene has sequence similarity with members of the WD40 repeat-containing protein family. The WD40 group is a large family of proteins, which appear to have a regulatory function. It is believed that the WD40 repeats mediate protein-protein interactions and members of the family are involved in signal transduction, RNA processing, gene regulation, vesicular trafficking, cytoskeletal assembly and may play a role in the control of cytotypic differentiation. This encoded protein is found as a subunit in corepressor SMRT (silencing mediator for retinoid and thyroid receptors) complex along with histone deacetylase 3 protein. This gene is located adjacent to the ocular albinism gene and it is thought to be involved in the pathogenesis of the ocular albinism with late-onset sensorineural deafness phenotype. Four transcript variants encoding two different isoforms have been found for this gene. This gene is highly similar to the Y chromosome TBL1Y gene. |
| 基因ID | 6907 |
| 基因名 | TBL1X |
| Swiss | O60907 |
| 别名 | TBL1X;EBI;SMAP55;TBL1 |

产品验证



Western blot analysis of TBL1X expressed in mouse brain, BxPC-3, HeLa using TBL1X Rabbit pAb at 1:1000. Secondary antibody: HRP Goat Anti-Rabbit IgG (H+L) at 1:5000. Lysates/proteins: 30ug per lane. Blocking buffer: 5% non-fat dry milk in TBST. Detection: ECL Enhanced Kit. Exposure time: 120s.

实验步骤

访问官网浏览详情: www.ablybio.cn