

SLC6A1 Rabbit pAb

货号: **AYP18637**

产品信息

反应	Human,Mouse,Rat
宿主	Rabbit
克隆性	Polyclonal
预测反应	
应用	WB IF/ICC
推荐浓度	WB: 1:500 - 1:2000 IF/ICC: 1:50 - 1:200
理论分子量	67kDa
实测分子量	67kDa
形式	Liquid
保存条件	Store at -20°C. Avoid freeze / thaw cycles. Buffer: PBS with 0.01% thiomersal,50% glycerol,pH7.3.
偶联物	Unconjugated
阳性对照	Mouse eye,Mouse brain,Rat brain
细胞定位	Cell membrane,Membrane,Multi-pass membrane protein
纯化	Affinity purification

抗原信息

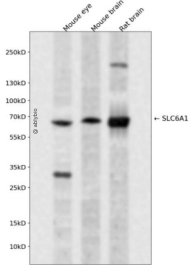
抗原信息	A synthetic peptide corresponding to a sequence within amino acids 500-600 of human SLC6A1 (NP_003033.3).
序列	WSFFTPIIVAGVFIFSAVQMTPLTMGNYVFPKWGGVGLMALSSMVLIPGYMAYMFLTLKGLKQRIQVMVQPSEDIR PENGPEQPQAGSSTSKEAYI

靶点信息

研究背景	The protein encoded by this gene is a gamma-aminobutyric acid (GABA) transporter that localizes to the plasma membrane. The encoded protein removes GABA from the synaptic cleft, restoring it to presynaptic terminals.
基因ID	6529

基因名	SLC6A1
Swiss	P30531
别名	SLC6A1;GABATHG;GABATR;GAT1;MAE

产品验证



Western blot analysis of SLC6A1 expressed in Mouse eye, Mouse brain, Rat brain using SLC6A1 Rabbit p Ab at 1:1000. Secondary antibody: HRP Goat Anti-Rabbit IgG (H+L) at 1:5000. Lysates/proteins: 30ug per lane. Blocking buffer: 5% non-fat dry milk in TBST. Detection: ECL Enhanced Kit. Exposure time: 120 S.

实验步骤

访问官网浏览详情: www.ablybio.cn