

# S1PR4 Rabbit pAb

货号: **AYP18632**

## 产品信息

反应	Human
宿主	Rabbit
克隆性	Polyclonal
预测反应	
应用	WB
推荐浓度	<b>WB:</b> 1:500 - 1:2000
理论分子量	41kDa
实测分子量	50kDa
形式	Liquid
保存条件	Store at -20°C. Avoid freeze / thaw cycles. Buffer: PBS with 0.01% thiomersal,50% glycerol,pH7.3.
偶联物	Unconjugated
阳性对照	Raji,A-549,Jurkat
细胞定位	Cell membrane,Multi-pass membrane protein
纯化	Affinity purification

## 抗原信息

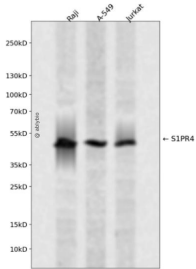
抗原信息	A synthetic peptide corresponding to a sequence within amino acids 300 to the C-terminus of human S1P R4 (NP_003766.1).
序列	SAVNPIIYSFRSREVCRAVLSFLCCGCLRLGMRGPGDCLARAVEAHSGASTTDSSLRPRDSFRGSRSLSFMRREPLSSISSVRSI

## 靶点信息

研究背景	This gene is a member of the endothelial differentiation, G-protein-coupled (EDG)) receptor gene family. EDG receptors bind lysophospholipids or lysosphingolipids as ligands, and are involved in cell signalling in many different cell types. This EDG receptor gene is intronless and is specifically expressed in the lymphoid tissue.
基因ID	8698

基因名	S1PR4
Swiss	O95977
别名	S1PR4;EDG6;LPC1;S1P4;SLP4

## 产品验证



Western blot analysis of S1PR4 expressed in Raji,A-549,Jurkat using S1PR4 Rabbit pAb at 1:1000. Secondary antibody: HRP Goat Anti-Rabbit IgG (H+L) at 1:5000. Lysates/proteins: 30ug per lane. Blocking buffer: 5% non-fat dry milk in TBST. Detection: ECL Enhanced Kit. Exposure time: 120s.

## 实验步骤

访问官网浏览详情: [www.ablybio.cn](http://www.ablybio.cn)