

SPON1 Rabbit pAb

货号: **AYP18622**

产品信息

反应	Mouse
宿主	Rabbit
克隆性	Polyclonal
预测反应	
应用	WB
推荐浓度	WB: 1:500 - 1:2000
理论分子量	90kDa
实测分子量	91kDa
形式	Liquid
保存条件	Store at -20°C. Avoid freeze / thaw cycles. Buffer: PBS with 0.01% thiomersal,50% glycerol,pH7.3.
偶联物	Unconjugated
阳性对照	mouse kidney,mouse brain
细胞定位	Secreted,extracellular matrix,extracellular space
纯化	Affinity purification

抗原信息

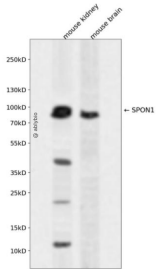
抗原信息	Recombinant fusion protein containing a sequence corresponding to amino acids 29-300 of human SPON 1 (NP_006099.2).
序列	FSDETLDKVPKSEGYCSRILRAQGTRREGYTEFSLRVEGDPDFYKPGTSYRVTLAAPPYFRGFTLIALRENREGDKEDH AGTFQIIDEDEETQFMSNCPVAVTESTPRRRTRIQVFWIAPPAGTGCVILKASIVQKRIYFQDEGLTKLCEQDSTFDGVTD KPILDCCACGTAKYRLTFYGNWSEKTHPKDYPRRANHWSAIIIGGSHSKNYVLWEYGGYASEGVKQVAELGSPVKMEEIIR QQSDEVLTVIKAKAQWPAWQPLNVRRA

靶点信息

研究背景	Cell adhesion protein that promotes the attachment of spinal cord and sensory neuron cells and the outgrowth of neurites in vitro. May contribute to the growth and guidance of axons in both the spinal cord and the PNS (By similarity. Major factor for vascular smooth muscle cell.
基因ID	10418

基因名	SPON1
Swiss	Q9HCB6
别名	SPON1;VSGP/F-spondin;f-spondin;spondin-1

产品验证



Western blot analysis of SPON1 expressed in mouse kidney, mouse brain using SPON1 Rabbit pAb at 1:1000. Secondary antibody: HRP Goat Anti-Rabbit IgG (H+L) at 1:5000. Lysates/proteins: 30ug per lane. Blocking buffer: 5% non-fat dry milk in TBST. Detection: ECL Enhanced Kit. Exposure time: 120s.

实验步骤

访问官网浏览详情: www.ablybio.cn