

Sec23B Rabbit pAb

货号: **AYP18621**

产品信息

反应	Human,Mouse,Rat
宿主	Rabbit
克隆性	Polyclonal
预测反应	
应用	WB IF/ICC
推荐浓度	WB: 1:500 - 1:2000 IF/ICC: 1:50 - 1:200
理论分子量	86kDa
实测分子量	86kDa
形式	Liquid
保存条件	Store at -20°C. Avoid freeze / thaw cycles. Buffer: PBS with 0.01% thiomersal,50% glycerol,pH7.3.
偶联物	Unconjugated
阳性对照	HeLa,HepG2,Raji
细胞定位	Endoplasmic reticulum membrane,Endoplasmic reticulum-Golgi intermediate compartment membrane,Golgi apparatus membrane
纯化	Affinity purification

抗原信息

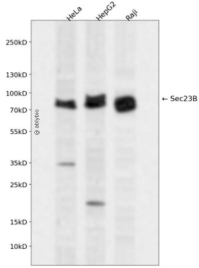
抗原信息	A synthetic peptide corresponding to a sequence within amino acids 150-250 of human Sec23B (NP_006354.2).
序列	SLQMSLSLLPPDALVGLITFGRMVQVHELSCGISYSYVFRGTKDLTAKIQIDMLGLTKPAMPMQARPAQPQEHPFASSRFLQPVHKIDMNLTDLLGELQ

靶点信息

研究背景	The protein encoded by this gene is a member of the SEC23 subfamily of the SEC23/SEC24 family, which is involved in vesicle trafficking. The encoded protein has similarity to yeast Sec23p component of COPII. COPII is the coat protein complex responsible for vesicle budding from the ER. The function of this gene product has been implicated in cargo selection and concentration. Multiple alternatively spliced transcript variants have been identified in this gene.
------	--

基因ID	10483
基因名	SEC23B
Swiss	Q15437
别名	SEC23B;CDA-II;CDAIL;CDAN2;CWS7;HEMPAS

产品验证



Western blot analysis of Sec23B expressed in HeLa, HepG2, Raji using Sec23B Rabbit pAb at 1:1000. Secondary antibody: HRP Goat Anti-Rabbit IgG (H+L) at 1:5000. Lysates/proteins: 30ug per lane. Blocking buffer: 5% non-fat dry milk in TBST. Detection: ECL Enhanced Kit. Exposure time: 120s.

实验步骤

访问官网浏览详情: www.ablybio.cn