

RNASEH2A Rabbit pAb

货号: **AYP18620**

产品信息

反应	Human,Rat
宿主	Rabbit
克隆性	Polyclonal
预测反应	
应用	WB IF/ICC
推荐浓度	WB: 1:500 - 1:2000 IF/ICC: 1:50 - 1:200
理论分子量	33kDa
实测分子量	33kDa
形式	Liquid
保存条件	Store at -20°C. Avoid freeze / thaw cycles. Buffer: PBS with 0.01% thiomersal,50% glycerol,pH7.3.
偶联物	Unconjugated
阳性对照	rat ovary, rat testis, rat liver
细胞定位	Nucleus
纯化	Affinity purification

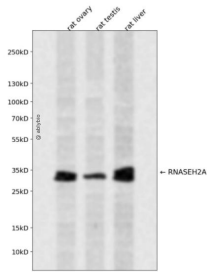
抗原信息

抗原信息	Recombinant fusion protein containing a sequence corresponding to amino acids 1-299 of human RNASE H2A (NP_006388.2).
序列	MDLSELERDNTGRCLSSPVPVAVCRKEPCVLGVDEAGRGPVLGPMVYAIICYCPLPRLADLEALKVADSKTLLESERERLFAK MEDTDFVGWALDVLSPNLISMLGRVKYNLNSLSHDTATGLIQYALDQGVNVTQVFVDTVGMPETYQARLQQSFPGIE VTVKAKADALYPVVSAAASICAKVARDQAVKKWQFVEKLQDLTDYGSGYPNDPKTKAWLKEHVEPVFGFPQFVRFSWR TAQTILEKEAEDVIWEDSASENQEGLRKITSYFLNEGSQARPRSSHRYFLERGLSATSL

靶点信息

研究背景	The protein encoded by this gene is a component of the heterotrimeric type II ribonuclease H enzyme (RNaseH2). RNaseH2 is the major source of ribonuclease H activity in mammalian cells and endonucleolytically cleaves ribonucleotides. It is predicted to remove Okazaki fragment RNA primers during lagging strand DNA synthesis and to excise single ribonucleotides from DNA-DNA duplexes. Mutations in this gene cause Aicardi-Goutieres Syndrome (AGS), an autosomal recessive neurological disorder characterized by progressive microcephaly and psychomotor retardation, intracranial calcifications, elevated levels of interferon- α and white blood cells in the cerebrospinal fluid.
基因ID	10535
基因名	RNASEH2A
Swiss	O75792
别名	RNASEH2A;AGS4;JUNB;RNASEHI;RNHIA;RNHL

产品验证



Western blot analysis of RNASEH2A expressed in rat ovary, rat testis, rat liver using RNASEH2A Rabbit pAb at 1:1000. Secondary antibody: HRP Goat Anti-Rabbit IgG (H+L) at 1:5000. Lysates/proteins: 30 μ g per lane. Blocking buffer: 5% non-fat dry milk in TBST. Detection: ECL Enhanced Kit. Exposure time: 120s.

实验步骤

访问官网浏览详情: www.ablybio.cn