

SLC22A7 Rabbit pAb

货号: **AYP18617**

产品信息

反应	Human,Mouse,Rat
宿主	Rabbit
克隆性	Polyclonal
预测反应	
应用	WB
推荐浓度	WB: 1:500 - 1:2000
理论分子量	26kDa/59kDa/60kDa
实测分子量	60kDa
形式	Liquid
保存条件	Store at -20°C. Avoid freeze / thaw cycles. Buffer: PBS with 0.01% thiomersal,50% glycerol,pH7.3.
偶联物	Unconjugated
阳性对照	U-251MG,HT-29,mouse liver,mouse kidney,rat kidney
细胞定位	Basolateral cell membrane,Multi-pass membrane protein
纯化	Affinity purification

抗原信息

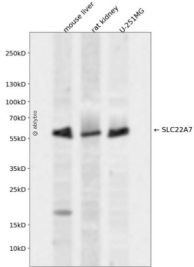
抗原信息	Recombinant fusion protein containing a sequence corresponding to amino acids 50-142 of human SLC22A7 (NP_696961.2).
序列	ALPGAPANFSHQDVWLEAHLPREPDGTLSSCLRFAYPQALPNTTLGEERQSRGELEDEPATVPCSQGWEDHSEFSSTIATESQWDLVCEQKG

靶点信息

研究背景	The protein encoded by this gene is involved in the sodium-independent transport and excretion of organic anions, some of which are potentially toxic. The encoded protein is an integral membrane protein and appears to be localized to the basolateral membrane of the kidney. Alternatively spliced transcript variants encoding different isoforms have been described.
基因ID	10864

基因名	SLC22A7
Swiss	Q9Y694
别名	SLC22A7;NLT;OAT2;hOAT11

产品验证



Western blot analysis of SLC22A7 expressed in mouse liver, rat kidney, U-251MG using SLC22A7 Rabbit pAb at 1:1000. Secondary antibody: HRP Goat Anti-Rabbit IgG (H+L) at 1:5000. Lysates/proteins: 30ug per lane. Blocking buffer: 5% non-fat dry milk in TBST. Detection: ECL Enhanced Kit. Exposure time: 12 0s.

实验步骤

访问官网浏览详情: www.ablybio.cn