

# CES2 Rabbit pAb

货号: **AYP18613**

## 产品信息

反应	Human,Mouse
宿主	Rabbit
克隆性	Polyclonal
预测反应	
应用	WB IF/ICC
推荐浓度	<b>WB:</b> 1:500 - 1:2000 <b>IF/ICC:</b> 1:50 - 1:200
理论分子量	59kDa/61kDa
实测分子量	67kDa
形式	Liquid
保存条件	Store at -20°C. Avoid freeze / thaw cycles. Buffer: PBS with 0.02% sodium azide,50% glycerol,pH7.3.
偶联物	Unconjugated
阳性对照	SW620,Mouse liver
细胞定位	Endoplasmic reticulum lumen
纯化	Affinity purification

## 抗原信息

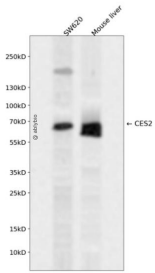
抗原信息	A synthetic peptide corresponding to a sequence within amino acids 310-410 of human CES2 (NP_003860.3).
序列	IPGVVDGVFLPRHPQELLASADFQPVPSIVGVNNNEFGWLIPKVMRIYDTQKEMDREASQAALQKMLTLMLPPTFGDLLR EEYIGDNGDPQTLQAQFQEM

## 靶点信息

研究背景	This gene encodes a member of the carboxylesterase large family. The family members are responsible for the hydrolysis or transesterification of various xenobiotics, such as cocaine and heroin, and endogenous substrates with ester, thioester, or amide bonds. They may participate in fatty acyl and cholesterol ester metabolism, and may play a role in the blood-brain barrier system. The protein encoded by this gene is the major intestinal enzyme and functions in intestine drug clearance. Alternatively spliced transcript variants have been found for this gene.
------	--

基因ID	8824
基因名	CES2
Swiss	O00748
别名	CES2;CE-2;CES2A1;PCE-2;iCE

## 产品验证



Western blot analysis of CES2 expressed in SW620, Mouse liver using CES2 Rabbit pAb at 1:1000. Secondary antibody: HRP Goat Anti-Rabbit IgG (H+L) at 1:5000. Lysates/proteins: 30ug per lane. Blocking buffer: 5% non-fat dry milk in TBST. Detection: ECL Enhanced Kit. Exposure time: 120s.

## 实验步骤

访问官网浏览详情: [www.ablybio.cn](http://www.ablybio.cn)