

# KLHDC2 Rabbit pAb

货号: **AYP18611**

## 产品信息

反应	Human
宿主	Rabbit
克隆性	Polyclonal
预测反应	
应用	WB
推荐浓度	<b>WB:</b> 1:500 - 1:1000
理论分子量	28kDa/46kDa
实测分子量	46kDa
形式	Liquid
保存条件	Store at -20°C. Avoid freeze / thaw cycles. Buffer: PBS with 0.05% proclin300,50% glycerol,pH7.3.
偶联物	Unconjugated
阳性对照	K-562
细胞定位	Nucleus
纯化	Affinity purification

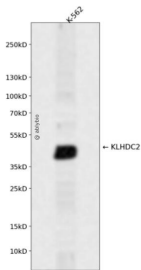
## 抗原信息

抗原信息	Recombinant fusion protein containing a sequence corresponding to amino acids 1-240 of human KLHDC 2 (NP_055130.1).
序列	MADGNEDLRADDLPGPAFESYESMELACPAERSGHVAVSDGRHMFVWGGYKSNQVRGLYDFYLPREELWIYNMETGR WKKINTEGDVPPSMGSCAVCVDRVLYLFGGHHSRGNTNKFYMLDSRSTDRVLQWERIDCQGIPPSSKDKLGVVVYKN KLIFGGYGYPEDKVLGTFEFDTSFWNSSHPRGWNHVDHILDTETFTWSQPITTKAPSPRAAHACATVGNRGFVFG GRYRDA

## 靶点信息

研究背景	Substrate-recognition component of a Cul2-RING (CRL2 E3 ubiquitin-protein ligase complex of the DesCE ND (destruction via C-end degrons pathway, which recognizes a C-degron located at the extreme C terminus of target proteins, leading to their ubiquitination and degradation. The C-degron recognized by the DesCEND pathway is usually a motif of less than ten residues and can be present in full-length proteins, truncated proteins or proteolytically cleaved forms. The CRL2(KLHDC2 complex specifically recognizes proteins with a diglycine (Gly-Gly at the C-terminus, leading to their ubiquitination and degradation. The CRL2(KLHDC2 complex mediates ubiquitination and degradation of truncated SELENOK and SELENOS selenoproteins produced by failed UGA/Sec decoding, which end with a diglycine. The CRL2(KLHDC2 complex also recognizes proteolytically cleaved proteins ending with Gly-Gly, such as the N-terminal fragment of USP1, leading to their degradation. May also act as an indirect repressor of CREB3-mediated transcription by interfering with CREB3-DNA-binding.
基因ID	23588
基因名	KLHDC2
Swiss	Q9Y2U9
别名	KLHDC2;HCLP-1;HCLP1;LCP

## 产品验证



Western blot analysis of KLHDC2 expressed in K-562 using KLHDC2 Rabbit pAb at 1:1000. Secondary antibody: HRP Goat Anti-Rabbit IgG (H+L) at 1:5000. Lysates/proteins: 30ug per lane. Blocking buffer: 5% non-fat dry milk in TBST. Detection: ECL Enhanced Kit. Exposure time: 120s.

## 实验步骤

访问官网浏览详情: [www.ablybio.cn](http://www.ablybio.cn)