

# CLDN17 Rabbit pAb

货号: **AYP18609**

## 产品信息

反应	Mouse,Rat
宿主	Rabbit
克隆性	Polyclonal
预测反应	
应用	WB IHC IF/ICC
推荐浓度	<b>WB:</b> 1:500 - 1:2000 <b>IHC:</b> 1:50 - 1:100 <b>IF/ICC:</b> 1:50 - 1:100
理论分子量	24kDa
实测分子量	29kDa
形式	Liquid
保存条件	Store at -20°C. Avoid freeze / thaw cycles. Buffer: PBS with 0.01% thiomersal,50% glycerol,pH7.3.
偶联物	Unconjugated
阳性对照	Mouse kidney,Rat kidney
细胞定位	Cell junction,Cell membrane,Multi-pass membrane protein,tight junction
纯化	Affinity purification

## 抗原信息

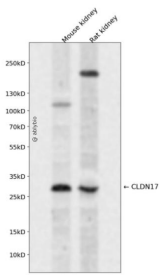
抗原信息	A synthetic peptide corresponding to a sequence within amino acids 100 to the C-terminus of human CLDN17 (NP_036263.1).
序列	CGMKQVQCTGSNERAKAYLLGTSGVLFILTGIFVLPVSWTANIIIRDFFYNPAIHIGQKRELGAALFLGWASAAVLFIGGGLLCGFCCCNRRKKQGYRYPVPGYRVPHTDKRRNTTMLSKTSTSYV

## 靶点信息

研究背景	This gene encodes a member of the claudin family. Claudins are integral membrane proteins and components of tight junction strands. Tight junction strands serve as a physical barrier to prevent solutes and water from passing freely through the paracellular space between epithelial or endothelial cell sheets, and also play critical roles in maintaining cell polarity and signal transductions. This gene is intronless and is clustered with CLDN8 on chromosome 21q22.11.
------	---

基因ID	26285
基因名	CLDN17
Swiss	P56750
别名	CLDN17

## 产品验证



Western blot analysis of CLDN17 expressed in Mouse kidney,Rat kidney using CLDN17 Rabbit pAb at 1:10 00. Secondary antibody: HRP Goat Anti-Rabbit IgG (H+L) at 1:5000. Lysates/proteins: 30ug per lane. Bloc king buffer: 5% non-fat dry milk in TBST. Detection: ECL Enhanced Kit. Exposure time: 120s.

## 实验步骤

访问官网浏览详情: [www.ablybio.cn](http://www.ablybio.cn)