

TAS2R10 Rabbit pAb

货号: **AYP18605**

产品信息

反应	Mouse,Rat
宿主	Rabbit
克隆性	Polyclonal
预测反应	
应用	WB
推荐浓度	WB: 1:500 - 1:2000
理论分子量	35kDa
实测分子量	37kDa
形式	Liquid
保存条件	Store at -20°C. Avoid freeze / thaw cycles. Buffer: PBS with 0.01% thiomersal,50% glycerol,pH7.3.
偶联物	Unconjugated
阳性对照	Mouse brain,Rat brain
细胞定位	Membrane,Multi-pass membrane protein
纯化	Affinity purification

抗原信息

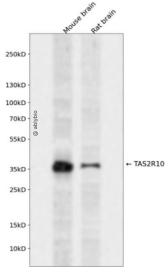
抗原信息	A synthetic peptide corresponding to a sequence within amino acids 100-200 of human TAS2R10 (NP_076410.1).
序列	TLSLIFYFLKIANFSNYIFLWLKSRNTMVLPMIVFLLISSLLNFAYIAKILNDYKTKNDTVWDLNMYKSEYFIKQILLNLGVIFFF TLSLITCIFLIISL

靶点信息

研究背景	This gene product belongs to the family of candidate taste receptors that are members of the G-protein-coupled receptor superfamily. These proteins are specifically expressed in the taste receptor cells of the tongue and palate epithelia. They are organized in the genome in clusters and are genetically linked to loci that influence bitter perception in mice and humans. In functional expression studies, they respond to bitter tastants. This gene maps to the taste receptor gene cluster on chromosome 12p13.
基因ID	50839

基因名	TAS2R10
Swiss	Q9NYW0
别名	TAS2R10;T2R10;TRB2

产品验证



Western blot analysis of TAS2R10 expressed in Mouse brain,Rat brain using TAS2R10 Rabbit pAb at 1:10 00. Secondary antibody: HRP Goat Anti-Rabbit IgG (H+L) at 1:5000. Lysates/proteins: 30ug per lane. Blocking buffer: 5% non-fat dry milk in TBST. Detection: ECL Enhanced Kit. Exposure time: 120s.

实验步骤

访问官网浏览详情: www.ablybio.cn