

# BTBD1 Rabbit pAb

货号: **AYP18604**

## 产品信息

反应	Mouse
宿主	Rabbit
克隆性	Polyclonal
预测反应	
应用	WB
推荐浓度	<b>WB:</b> 1:500 - 1:2000
理论分子量	42kDa/52kDa
实测分子量	57kDa
形式	Liquid
保存条件	Store at -20°C. Avoid freeze / thaw cycles. Buffer: PBS with 0.01% thiomersal,50% glycerol,pH7.3.
偶联物	Unconjugated
阳性对照	Mouse thymus,Mouse brain,Mouse kidney
细胞定位	Cytoplasm,P-body
纯化	Affinity purification

## 抗原信息

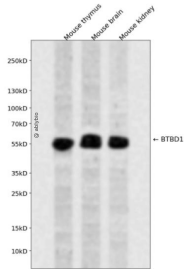
抗原信息	A synthetic peptide corresponding to a sequence within amino acids 400 to the C-terminus of human BTB D1 (NP_079514.1).
序列	CDGTANTFRVMFKEPIEILPNVCYTACATLKGPD SHYGTKLKKVVHETPAASKTVFFFSSPGNNGTSIEDGQIPEIIFYT

## 靶点信息

研究背景	The C-terminus of the protein encoded by this gene binds topoisomerase I. The N-terminus contains a pro line-rich region and a BTB/POZ domain (broad-complex, Tramtrack and bric a brac/Pox virus and Zinc finger), both of which are typically involved in protein-protein interactions. Subcellularly, the protein localizes to cytoplasmic bodies. Alternative splicing results in multiple transcript variants encoding different isoforms.
基因ID	53339

基因名	BTBD1
Swiss	Q9H0C5
别名	BTBD1;C15orf1;NS5ATP8

## 产品验证



Western blot analysis of BTBD1 expressed in Mouse thymus, Mouse brain, Mouse kidney using BTBD1 Rabbit pAb at 1:1000. Secondary antibody: HRP Goat Anti-Rabbit IgG (H+L) at 1:5000. Lysates/proteins: 30ug per lane. Blocking buffer: 5% non-fat dry milk in TBST. Detection: ECL Enhanced Kit. Exposure time : 120s.

## 实验步骤

访问官网浏览详情: [www.ablybio.cn](http://www.ablybio.cn)