

# EIF4ENIF1 Rabbit pAb

货号: **AYP18597**

## 产品信息

反应	Human,Mouse,Rat
宿主	Rabbit
克隆性	Polyclonal
预测反应	
应用	WB IF/ICC
推荐浓度	<b>WB:</b> 1:500 - 1:2000 <b>IF/ICC:</b> 1:50 - 1:200
理论分子量	88kDa/108kDa
实测分子量	178kDa
形式	Liquid
保存条件	Store at -20°C. Avoid freeze / thaw cycles. Buffer: PBS with 0.01% thiomersal,50% glycerol,pH7.3.
偶联物	Unconjugated
阳性对照	U-251MG,HeLa,HT-29,LO2
细胞定位	Cytoplasm,Nucleus,Nucleus speckle,PML body
纯化	Affinity purification

## 抗原信息

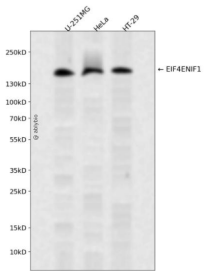
抗原信息	A synthetic peptide corresponding to a sequence within amino acids 150-250 of human EIF4ENIF1 (NP_001157973.1).
序列	LGRRIGSGRIISARTFEKDHRLSDKDLRDLRDRERDFKDKRFRREFGDSKRVFGERRRNDSYTEEEPEWFSAGPTSQSETIELTGFDDKILEEDHKGR

## 靶点信息

研究背景	The protein encoded by this gene is a nucleocytoplasmic shuttle protein for the translation initiation factor eIF4E. This shuttle protein interacts with the importin alpha-beta complex to mediate nuclear import of eIF4E. It is predominantly cytoplasmic; its own nuclear import is regulated by a nuclear localization signal and nuclear export signals. Multiple transcript variants encoding different isoforms have been found for this gene.
------	--

基因ID	56478
基因名	EIF4ENIF1
Swiss	Q9NRA8
别名	EIF4ENIF1;4E-T;Clast4

## 产品验证



Western blot analysis of EIF4ENIF1 expressed in U-251MG, HeLa, HT-29 using EIF4ENIF1 Rabbit pAb at 1:1000. Secondary antibody: HRP Goat Anti-Rabbit IgG (H+L) at 1:5000. Lysates/proteins: 30ug per lane. Blocking buffer: 5% non-fat dry milk in TBST. Detection: ECL Enhanced Kit. Exposure time: 120s.

## 实验步骤

访问官网浏览详情: [www.ablybio.cn](http://www.ablybio.cn)