

SLC13A3 Rabbit pAb

货号: **AYP18594**

产品信息

反应	Human
宿主	Rabbit
克隆性	Polyclonal
预测反应	
应用	WB
推荐浓度	WB: 1:500 - 1:2000
理论分子量	25kDa/37kDa/57kDa/61kDa/66kDa
实测分子量	65kDa
形式	Liquid
保存条件	Store at -20°C. Avoid freeze / thaw cycles. Buffer: PBS with 0.01% thiomersal,50% glycerol,pH7.3.
偶联物	Unconjugated
阳性对照	U-251MG,293T
细胞定位	Cell membrane,Multi-pass membrane protein
纯化	Affinity purification

抗原信息

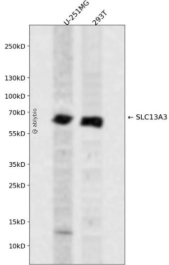
抗原信息	Recombinant fusion protein containing a sequence corresponding to amino acids 160-240 of human SLC13A3 (NP_073740.2).
序列	KSLFGQKEVRKDPSQESEENTAARRRNLHTVPTMQFLASTEAKDHPGETEVPLDLPADSRKEDEYRRNIWKGFLISIPY

靶点信息

研究背景	Mammalian sodium-dicarboxylate cotransporters transport succinate and other Krebs cycle intermediates . They fall into 2 categories based on their substrate affinity: low affinity and high affinity. Both the low- and high-affinity transporters play an important role in the handling of citrate by the kidneys. The protein encoded by this gene represents the high-affinity form. Alternatively spliced transcript variants encoding different isoforms have been found for this gene, although the full-length nature of some of them have not been characterized yet.
基因ID	64849

基因名	SLC13A3
Swiss	Q8WWT9
别名	SLC13A3;NADC3;SDCT2

产品验证



Western blot analysis of SLC13A3 expressed in U-251MG,293T using SLC13A3 Rabbit pAb at 1:1000. Secondary antibody: HRP Goat Anti-Rabbit IgG (H+L) at 1:5000. Lysates/proteins: 30ug per lane. Blocking buffer: 5% non-fat dry milk in TBST. Detection: ECL Enhanced Kit. Exposure time: 120s.

实验步骤

访问官网浏览详情: www.ablybio.cn