

# DGCR6L Rabbit pAb

货号: **AYP18587**

## 产品信息

反应	Human,Mouse,Rat
宿主	Rabbit
克隆性	Polyclonal
预测反应	
应用	WB
推荐浓度	<b>WB:</b> 1:500 - 1:2000
理论分子量	24kDa
实测分子量	25kDa
形式	Liquid
保存条件	Store at -20°C. Avoid freeze / thaw cycles. Buffer: PBS with 0.01% thiomersal,50% glycerol,pH7.3.
偶联物	Unconjugated
阳性对照	Mouse liver,Rat liver
细胞定位	Nucleus
纯化	Affinity purification

## 抗原信息

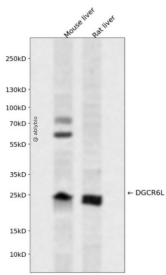
抗原信息	Recombinant fusion protein containing a sequence corresponding to amino acids 1-220 of human DGCR6L (NP_150282.2).
序列	MERYAAALEEVADGARQQRHYQLLSALQSLVKELPSSFQRLSYTTLSDLALALLDGTVFEIVQGLLEIQHLTEKSLYNQRLRLQNEHRVLRQALRQKHQEAQQACRPHNLPVVQAAQQRELEAVEHRIREEQRAMDQKIILELDRKVADQQSTLEKAGVAGFYVTTNPQELMLQMNLELIRKLQQRGCRAGNAALGLGGPWQSPAAQCDQKGGSPVPP

## 靶点信息

研究背景	This gene, the result of a duplication at this locus, is one of two functional genes encoding nearly identical proteins that have similar expression patterns. The product of this gene is a protein that shares homology with the Drosophila gonadal protein, expressed in gonadal tissues and germ cells, and with the human laminin gamma-1 chain that functions in cell attachment and migration. This gene is located in a region of chromosome 22 implicated in the DiGeorge syndrome, one facet of a broader collection of anomalies referred to as the CATCH 22 syndrome.
------	---

基因ID	85359
基因名	DGCR6L
Swiss	Q9BY27
别名	DGCR6L;DGCR6

## 产品验证



Western blot analysis of DGCR6L expressed in Mouse liver,Rat liver using DGCR6L Rabbit pAb at 1:1000. Secondary antibody: HRP Goat Anti-Rabbit IgG (H+L) at 1:5000. Lysates/proteins: 30ug per lane. Blocking buffer: 5% non-fat dry milk in TBST. Detection: ECL Enhanced Kit. Exposure time: 120s.

## 实验步骤

访问官网浏览详情: [www.ablybio.cn](http://www.ablybio.cn)