

LYPLAL1 Rabbit pAb

货号: **AYP18585**

产品信息

反应	Mouse
宿主	Rabbit
克隆性	Polyclonal
预测反应	
应用	WB
推荐浓度	WB: 1:500 - 1:2000
理论分子量	24kDa/26kDa
实测分子量	28kDa
形式	Liquid
保存条件	Store at -20°C. Avoid freeze / thaw cycles. Buffer: PBS with 0.01% thiomersal, 50% glycerol, pH7.3.
偶联物	Unconjugated
阳性对照	Mouse pancreas
细胞定位	Cytoplasm, cytosol
纯化	Affinity purification

抗原信息

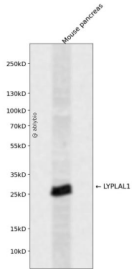
抗原信息	A synthetic peptide corresponding to a sequence within amino acids 1-100 of human LYPLAL1 (NP_620149.2).
序列	MAAASGSVLQRCIVSPAGRHSASLIFLHGSGDSGQGLRMWIKQLNQLTFQHIKIIYPTAPPRSYTPMKGGISNVWDFDRF KITNDCEPHLESIDVMCQV

靶点信息

研究背景	Has depalmitoylating activity toward KCNMA1. Does not exhibit phospholipase nor triacylglycerol lipase activity, able to hydrolyze only short chain substrates due to its shallow active site.
基因ID	127018
基因名	LYPLAL1

Swiss	Q5VWZ2
别名	LYPLAL1;Q96AV0

产品验证



Western blot analysis of LYPLAL1 expressed in Mouse pancreas using LYPLAL1 Rabbit pAb at 1:1000. Secondary antibody: HRP Goat Anti-Rabbit IgG (H+L) at 1:5000. Lysates/proteins: 30ug per lane. Blocking buffer: 5% non-fat dry milk in TBST. Detection: ECL Enhanced Kit. Exposure time: 120s.

实验步骤

访问官网浏览详情: www.ablybio.cn