

RE RE Rabbit pAb

货号: **AYP18559**

产品信息

反应	Human,Mouse,Rat
宿主	Rabbit
克隆性	Polyclonal
预测反应	
应用	WB IHC
推荐浓度	WB: 1:200 - 1:2000 IHC: 1:50 - 1:200
理论分子量	109kDa/172kDa
实测分子量	172kDa
形式	Liquid
保存条件	Store at -20°C. Avoid freeze / thaw cycles. Buffer: PBS with 0.01% thiomersal,50% glycerol,pH7.3.
偶联物	Unconjugated
阳性对照	LO2,HeLa,Jurkat
细胞定位	Nucleus
纯化	Affinity purification

抗原信息

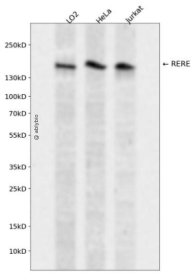
抗原信息	Recombinant fusion protein containing a sequence corresponding to amino acids 1-220 of human RERE (NP_036234.3).
序列	MTADKDKDKDKEKDRDRDRDREREKRDKARESENSRPRRSCTLEGGAKNYAESDHSEDEDNDNNSATAEESTKKNKK KPPKKKSRYERTDTGEITSYITEDDVVYRPGDCVYIESRRPNTPYFICSIQDFKLVHNSQACCRSPALCDPPACSLPVASQ PPQHLSEAGRGPVGSKRDLHLLMNVKWYRQSEVPDSVYQHLVQDRHNENDSGRELVTDP

靶点信息

研究背景	This gene encodes a member of the atrophin family of arginine-glutamic acid (RE) dipeptide repeat-containing proteins. The encoded protein co-localizes with a transcription factor in the nucleus, and its overexpression triggers apoptosis. A similar protein in mouse associates with histone deacetylase and is thought to function as a transcriptional co-repressor during embryonic development. Multiple transcript variants encoding different isoforms have been found for this gene.
------	--

基因ID	473
基因名	RERE
Swiss	Q9P2R6
别名	RERE;ARG;ARP;ATN1L;DNB1;NEDBEH

产品验证



Western blot analysis of RERE expressed in LO2, HeLa, Jurkat using RERE Rabbit pAb at 1:1000. Secondary antibody: HRP Goat Anti-Rabbit IgG (H+L) at 1:5000. Lysates/proteins: 30ug per lane. Blocking buffer: 5% non-fat dry milk in TBST. Detection: ECL Enhanced Kit. Exposure time: 120s.

实验步骤

访问官网浏览详情: www.ablybio.cn