

# AFM Rabbit pAb

货号: **AYP18557**

## 产品信息

反应	Rat
宿主	Rabbit
克隆性	Polyclonal
预测反应	
应用	WB
推荐浓度	<b>WB:</b> 1:200 - 1:2000
理论分子量	69kDa
实测分子量	69kDa
形式	Liquid
保存条件	Store at -20°C. Avoid freeze / thaw cycles. Buffer: PBS with 0.01% thiomersal, 50% glycerol, pH7.3.
偶联物	Unconjugated
阳性对照	Rat heart
细胞定位	Secreted
纯化	Affinity purification

## 抗原信息

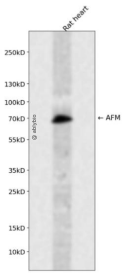
抗原信息	Recombinant fusion protein containing a sequence corresponding to amino acids 260-599 of human AFM (NP_001124.1).
序列	EDVSSNYDGCCEGDVWQCIRDTSKVMNHICSKQDSISSKIKECCEKIPERGQCIINSNKDDRPKDLREGKFTDSENV QERDADPDTFFAKFTFEYSRRHPDLSIPELLRIVQIYKDLLRNCNTENPPGCYRYAEDKFNETTEKSLKMOVQEQCKHFQNL GKDGLKYHYLIRLTKIAPQLSTEELVSLGKEMVTAFTTCCTLSEEFACVDNLADLVFGELCGVNENRTINPAVDHCCKTNFAF RRPCFESLKADKTYVPPPFSQLFTFHADMCQSQNEELQRKTDRFLVNLVCLKHELTDEELQSLFTNFANVVDKCKCAESP EVCFNESPKIGN

## 靶点信息

研究背景	This gene is a member of the albumin gene family, which is comprised of four genes that localize to chromosome 4 in a tandem arrangement. These four genes encode structurally-related serum transport proteins that are known to be evolutionarily related. The protein encoded by this gene is regulated developmentally, expressed in the liver and secreted into the bloodstream.
------	---

基因ID	173
基因名	AFM
Swiss	P43652
别名	AFM;ALB2;ALBA;ALF;afamin

## 产品验证



Western blot analysis of AFM expressed in Rat heart using AFM Rabbit pAb at 1:1000. Secondary antibody : HRP Goat Anti-Rabbit IgG (H+L) at 1:5000. Lysates/proteins: 30ug per lane. Blocking buffer: 5% non-fat dry milk in TBST. Detection: ECL Enhanced Kit. Exposure time: 120s.

## 实验步骤

访问官网浏览详情: [www.ablybio.cn](http://www.ablybio.cn)