

# CENPE Rabbit pAb

货号: **AYP18550**

## 产品信息

反应	Human,Mouse,Rat
宿主	Rabbit
克隆性	Polyclonal
预测反应	
应用	WB
推荐浓度	<b>WB:</b> 1:200 - 1:2000
理论分子量	301kDa/312kDa/316kDa
实测分子量	270kDa
形式	Liquid
保存条件	Store at -20°C. Avoid freeze / thaw cycles. Buffer: PBS with 0.01% thiomersal,50% glycerol,pH7.3.
偶联物	Unconjugated
阳性对照	U-87MG,HeLa,Rat brain
细胞定位	Chromosome,Cytoplasm,centromere,cytoskeleton,kinetochore,spindle
纯化	Affinity purification

## 抗原信息

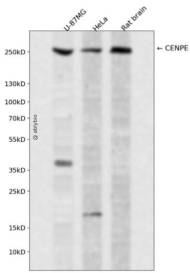
抗原信息	Recombinant fusion protein containing a sequence corresponding to amino acids 2542-2701 of human CENPE (NP_001804.2).
序列	ALILKSEHIRLEKEISKLKQQNEQLIKQKNELLSNNQHLSNEVKTWKERTLKREAHKQVTCENSPKSPKVTGTASKKKQITPSQCKERNLQDPVPKESPKSCFFDSRSKSLPSPHPVRYFDNSSLGLCPEVQNAGAESVDSQPGPWHASSGKDVPECKTQ

## 靶点信息

研究背景	Centrosome-associated protein E (CENPE) is a kinesin-like motor protein that accumulates in the G2 phase of the cell cycle. Unlike other centrosome-associated proteins, it is not present during interphase and first appears at the centromere region of chromosomes during prometaphase. This protein is required for stable spindle microtubule capture at kinetochores which is a necessary step in chromosome alignment during prometaphase. This protein also couples chromosome position to microtubule depolymerizing activity. Alternative splicing results in multiple transcript variants encoding distinct protein isoforms.
------	---

基因ID	1062
基因名	CENPE
Swiss	Q02224
别名	CENPE;CENP-E;KIF10;MCPH13;PPP1R61

## 产品验证



Western blot analysis of CENPE expressed in U-87MG, HeLa, Rat brain using CENPE Rabbit pAb at 1:1000. Secondary antibody: HRP Goat Anti-Rabbit IgG (H+L) at 1:5000. Lysates/proteins: 30ug per lane. Blocking buffer: 5% non-fat dry milk in TBST. Detection: ECL Enhanced Kit. Exposure time: 120s.

## 实验步骤

访问官网浏览详情: [www.ablybio.cn](http://www.ablybio.cn)