

# CRYBA1 Rabbit pAb

货号: **AYP18549**

## 产品信息

反应	Mouse,Rat
宿主	Rabbit
克隆性	Polyclonal
预测反应	
应用	WB
推荐浓度	<b>WB:</b> 1:200 - 1:2000
理论分子量	23kDa/25kDa
实测分子量	25kDa
形式	Liquid
保存条件	Store at -20°C. Avoid freeze / thaw cycles. Buffer: PBS with 0.01% thiomersal,50% glycerol,pH7.3.
偶联物	Unconjugated
阳性对照	Mouse eye,Rat eye
细胞定位	cytoplasm,lysosome,nucleus
纯化	Affinity purification

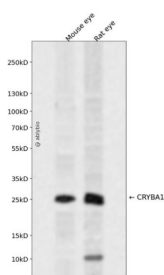
## 抗原信息

抗原信息	Recombinant fusion protein containing a sequence corresponding to amino acids 1-215 of human CRYBA1 (NP_005199.2).
序列	METQAEQQELETLPPTTKMAQTNPPTGSLGPPWKITIDYDQENFQGRMEFTSSCPNVSERSFDNVRSLKVESGAWIGYEHTS FCGQQFILERGEYPRWDAWSGSNAYHIERLMSFRPICSANHKESKMTIFEKENFIGRQWEISDDYPSLQAMGWFNNEVG SMKIQSGAWVCYQYPGYRQYILECDHHGGDYKHWREWGSHAQTSQIQSIRRIQQ

## 靶点信息

研究背景	Crystallins are separated into two classes: taxon-specific, or enzyme, and ubiquitous. The latter class constitutes the major proteins of vertebrate eye lens and maintains the transparency and refractive index of the lens. Since lens central fiber cells lose their nuclei during development, these crystallins are made and then retained throughout life, making them extremely stable proteins. Mammalian lens crystallins are divided into alpha, beta, and gamma families; beta and gamma crystallins are also considered as a superfamily. Alpha and beta families are further divided into acidic and basic groups. Seven protein regions exist in crystallins: four homologous motifs, a connecting peptide, and N- and C-terminal extensions. Beta-crystallins, the most heterogeneous, differ by the presence of the C-terminal extension (present in the basic group, none in the acidic group). Beta-crystallins form aggregates of different sizes and are able to self-associate to form dimers or to form heterodimers with other beta-crystallins. This gene, a beta acidic group member, encodes two proteins (crystallin, beta A3 and crystallin, beta A1) from a single mRNA, the latter protein is 17 aa shorter than crystallin, beta A3 and is generated by use of an alternate translation initiation site. Deletion of exons 3 and 4 causes the autosomal dominant disease 'zonular cataract with sutural opacities'.
基因ID	1411
基因名	CRYBA1
Swiss	P05813
别名	CRYBA1;CRYB1;CTRCT10

## 产品验证



Western blot analysis of CRYBA1 expressed in Mouse eye,Rat eye using CRYBA1 Rabbit pAb at 1:1000. Secondary antibody: HRP Goat Anti-Rabbit IgG (H+L) at 1:5000. Lysates/proteins: 30ug per lane. Blocking buffer: 5% non-fat dry milk in TBST. Detection: ECL Enhanced Kit. Exposure time: 120s.

## 实验步骤

访问官网浏览详情: [www.ablybio.cn](http://www.ablybio.cn)